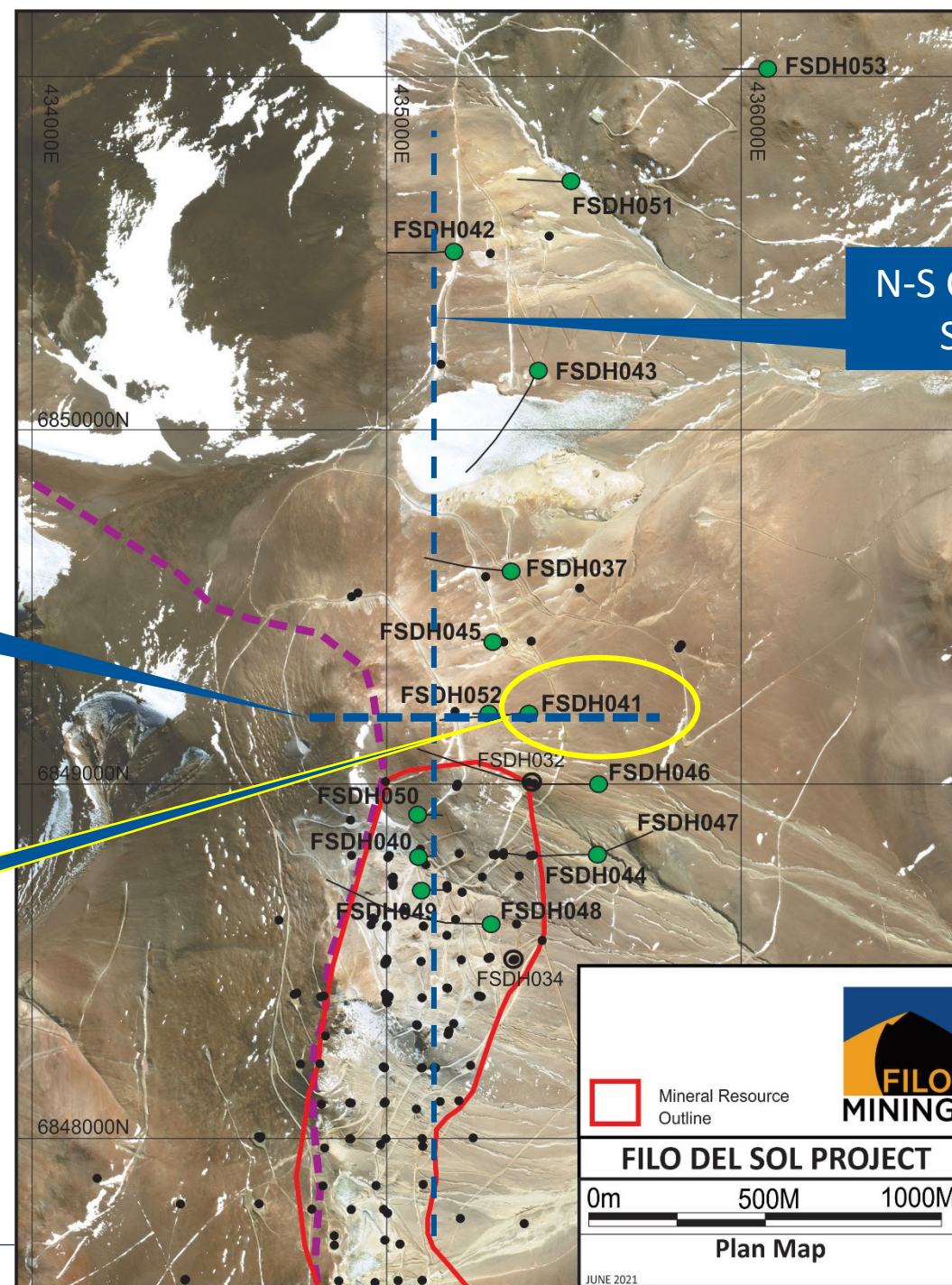


FILO 2020/2021 PROGRAM

- Sections and Photos from 2020/2021 Drill Holes
- Grade values are from 2 metre intervals containing the photographed sample



N-S Composite Section

Section 9200N

FSDH041

Mineral Resource Outline

FILO DEL SOL PROJECT

0m 500M 1000M

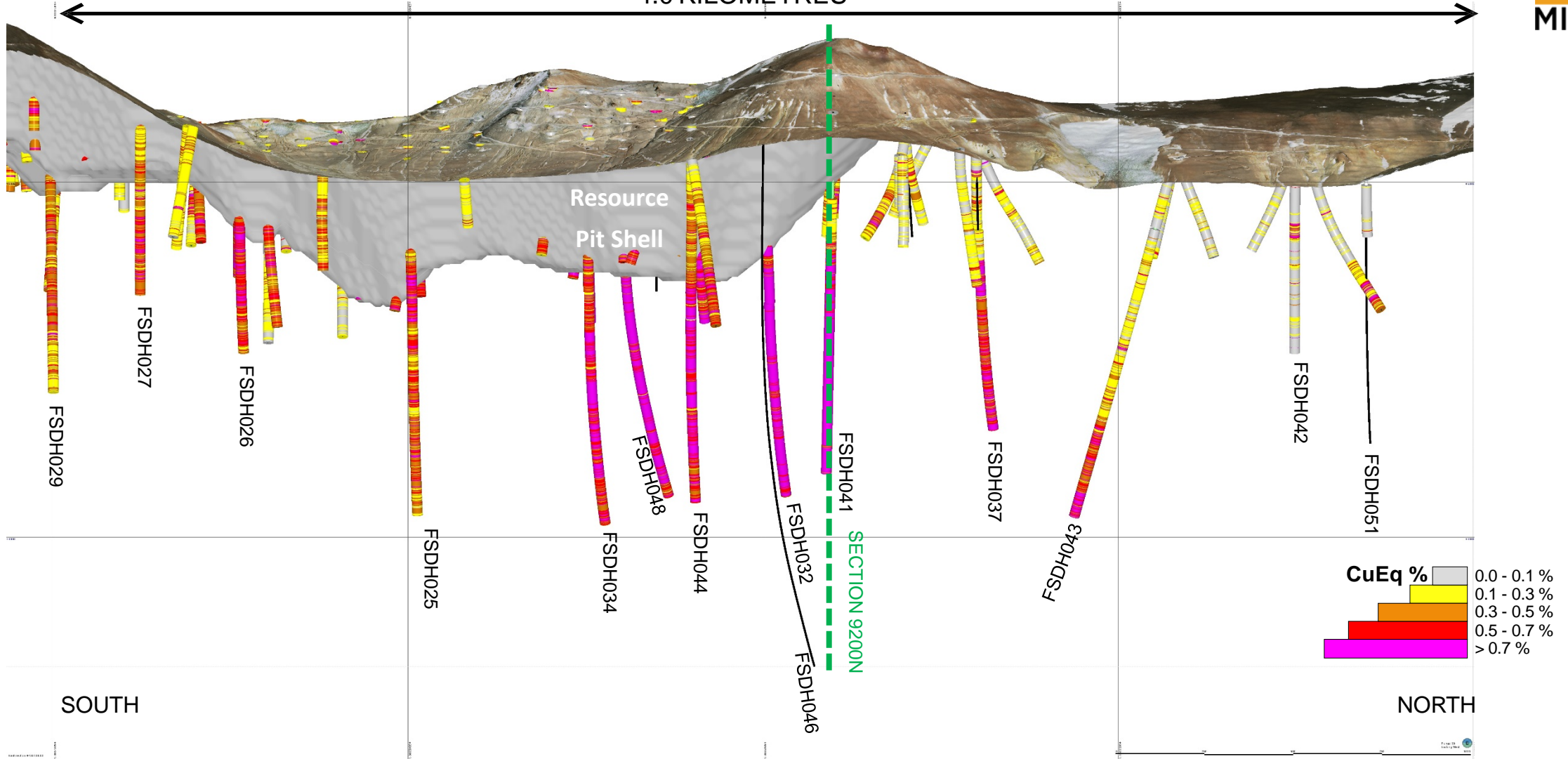
Plan Map

JUNE 2021

DEEP DRILLING RESULTS



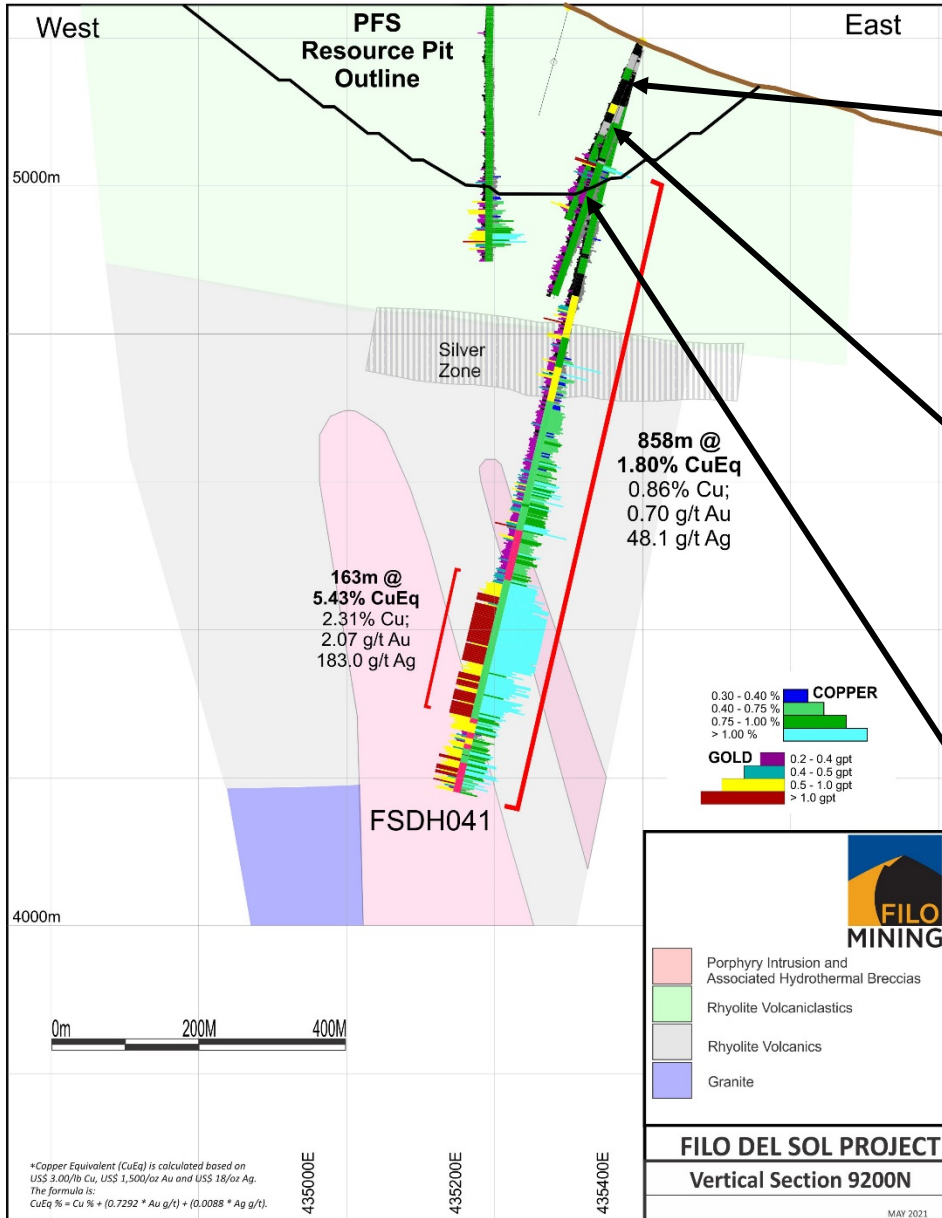
4.0 KILOMETRES



Copper Equivalent (CuEq) is calculated based on US\$ 3.00/lb Cu, US\$ 1,500/oz Au and US\$ 18/oz Ag. The formula is: $CuEq \% = Cu \% + (0.7292 * Au \text{ g/t}) + (0.0088 * Ag \text{ g/t})$.

View to West

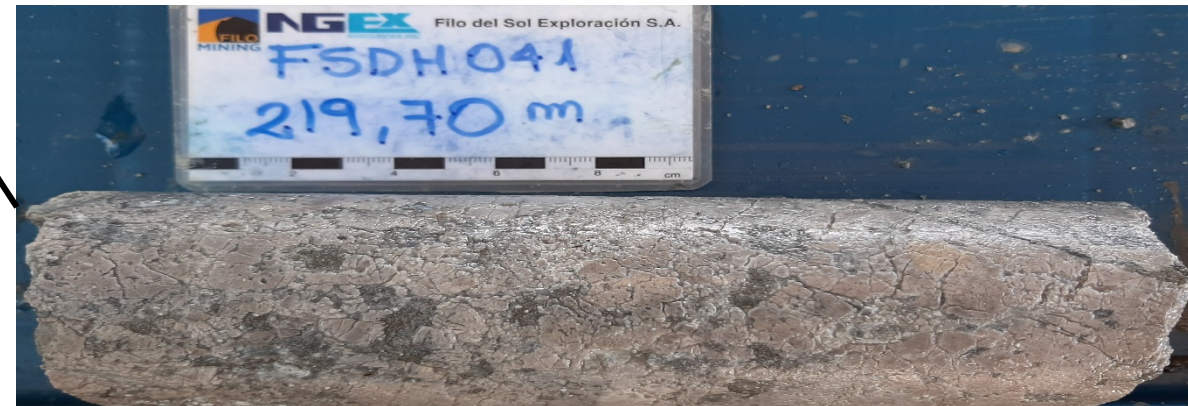
SECTION 9200N



0.02% CuEq (0.01% Cu; 0.01 g/t Au; 0.5 g/t Ag)

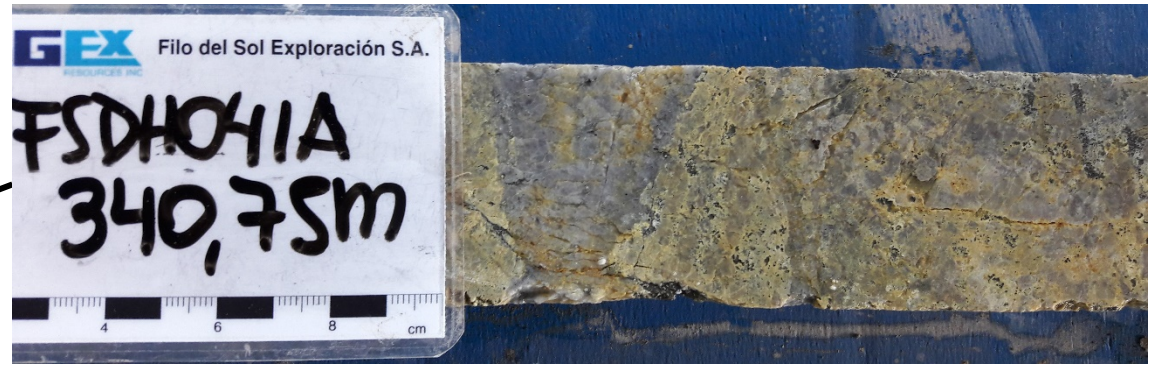
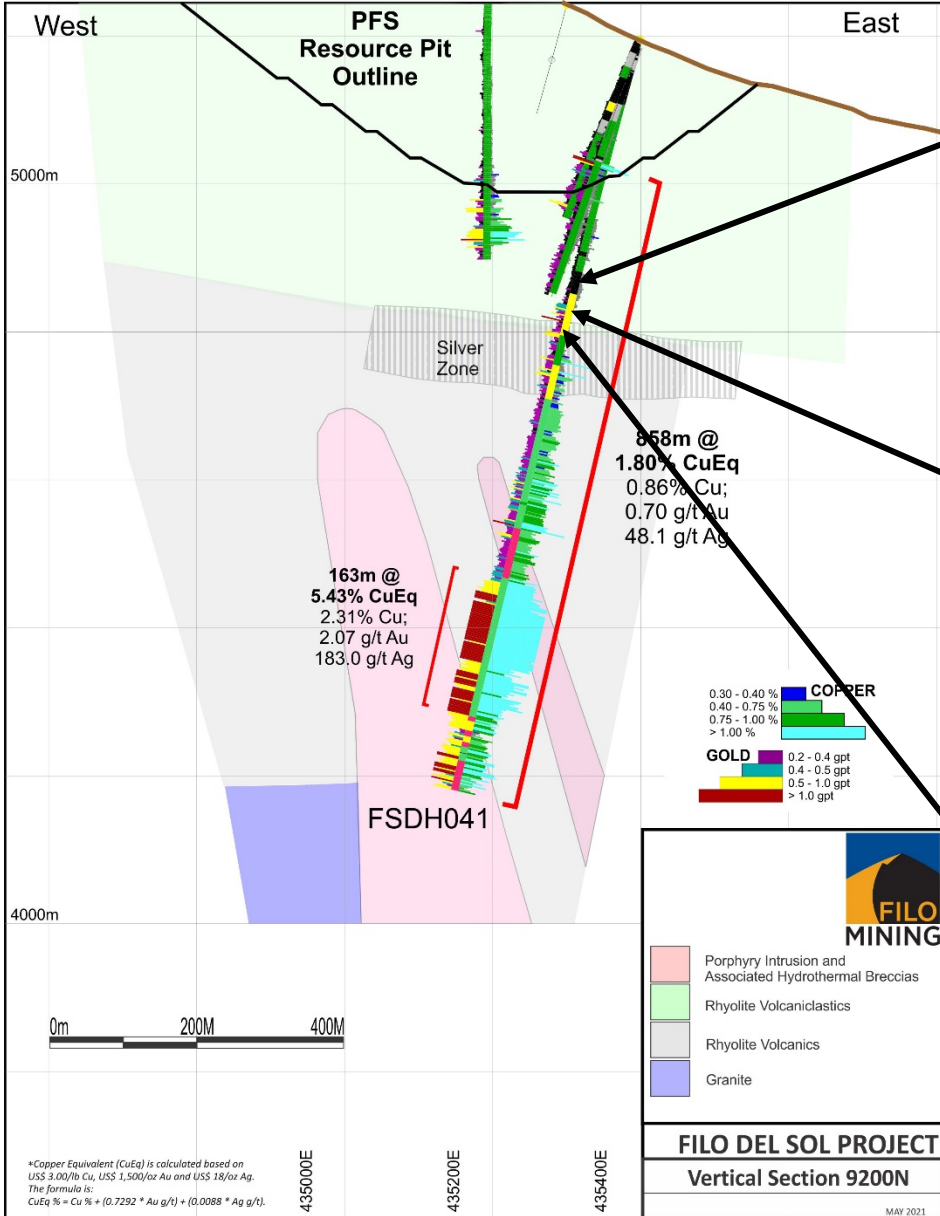


0.08% CuEq (0.02% Cu; 0.07 g/t Au; 1.0 g/t Ag)

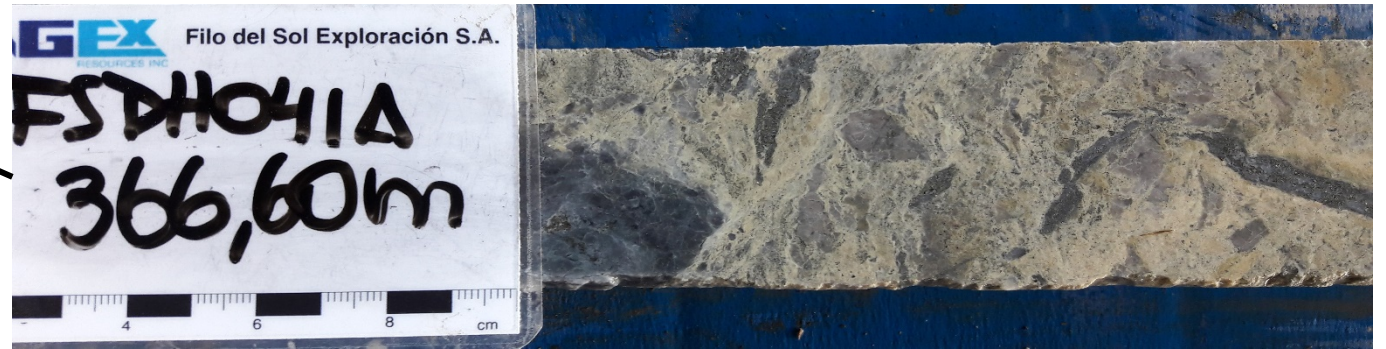


0.44% CuEq (0.19% Cu; 0.26 g/t Au; 7.0 g/t Ag)

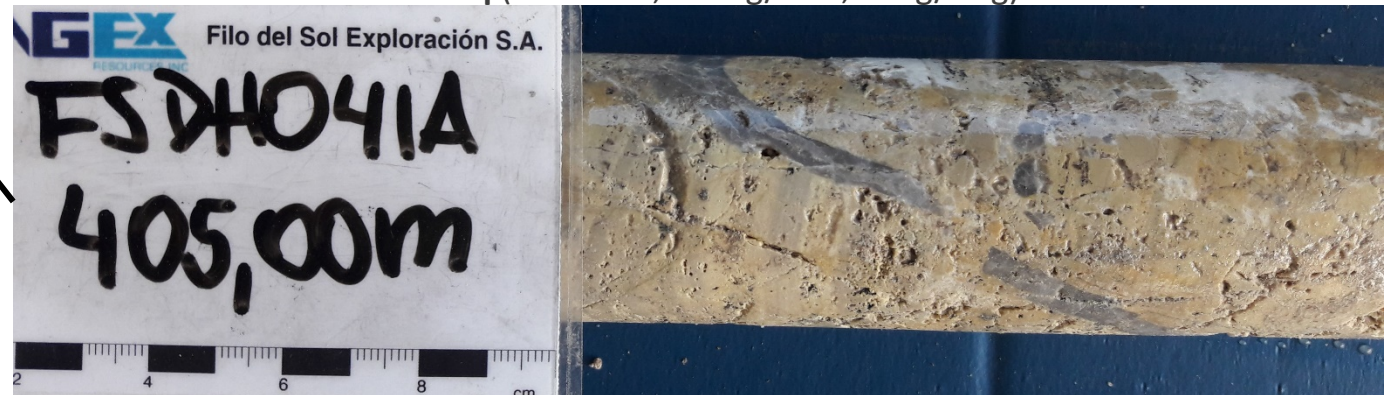
SECTION 9200N



0.22% CuEq (0.12% Cu; 0.12 g/t Au; 1.0 g/t Ag)

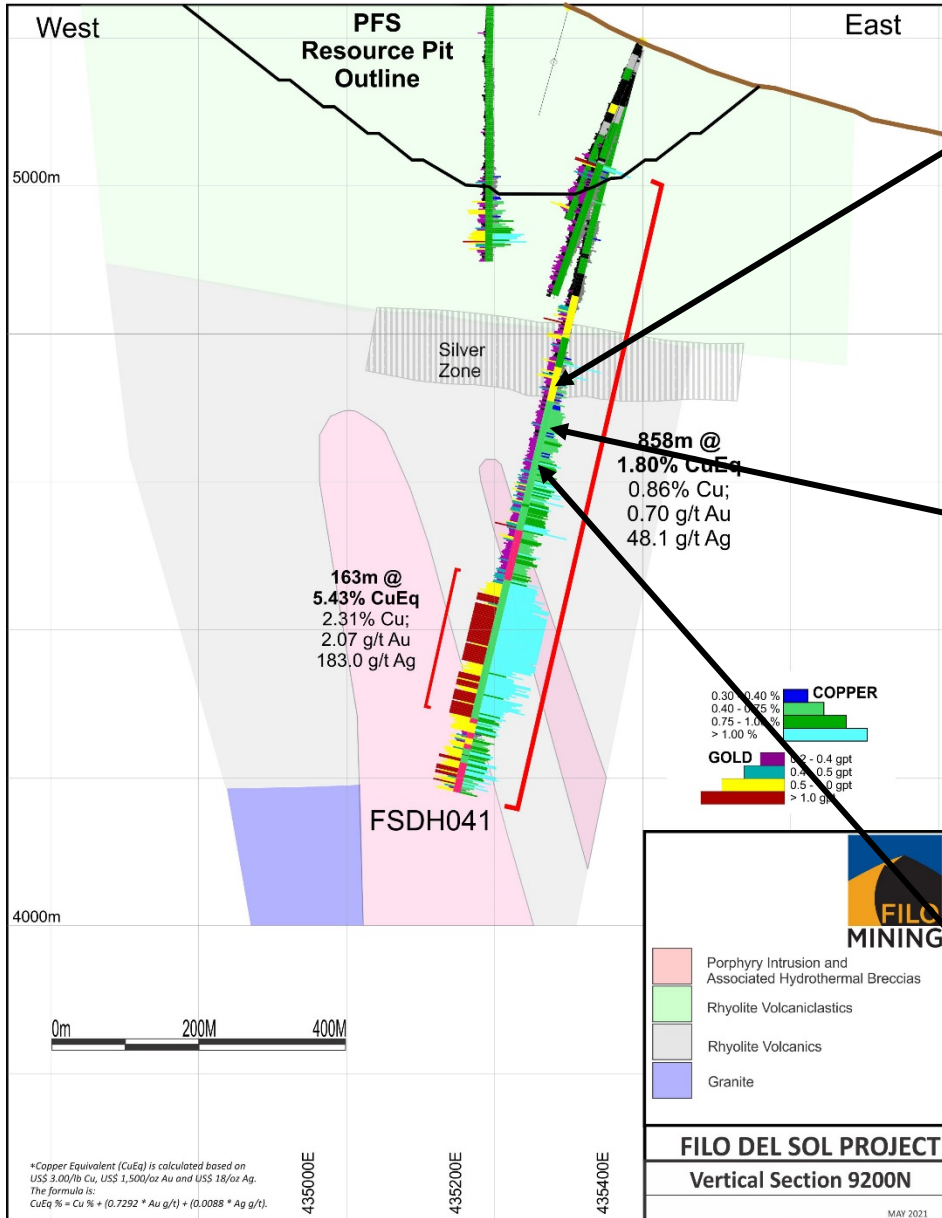


0.31% CuEq (0.04% Cu; 0.27 g/t Au; 8.0 g/t Ag)



0.45% CuEq (0.04% Cu; 0.25 g/t Au; 26.0 g/t Ag)

SECTION 9200N



1.99% CuEq (0.49% Cu; 0.47 g/t Au; 132.0 g/t Ag)

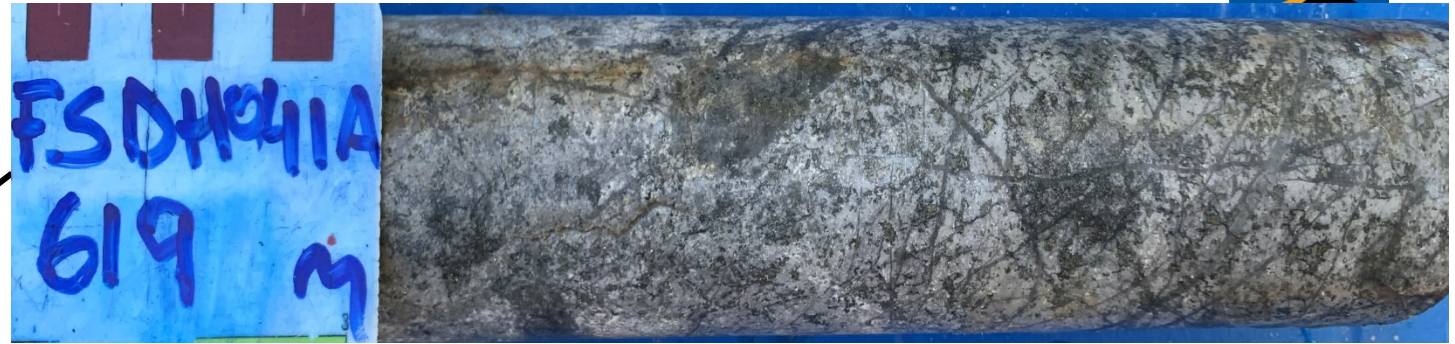
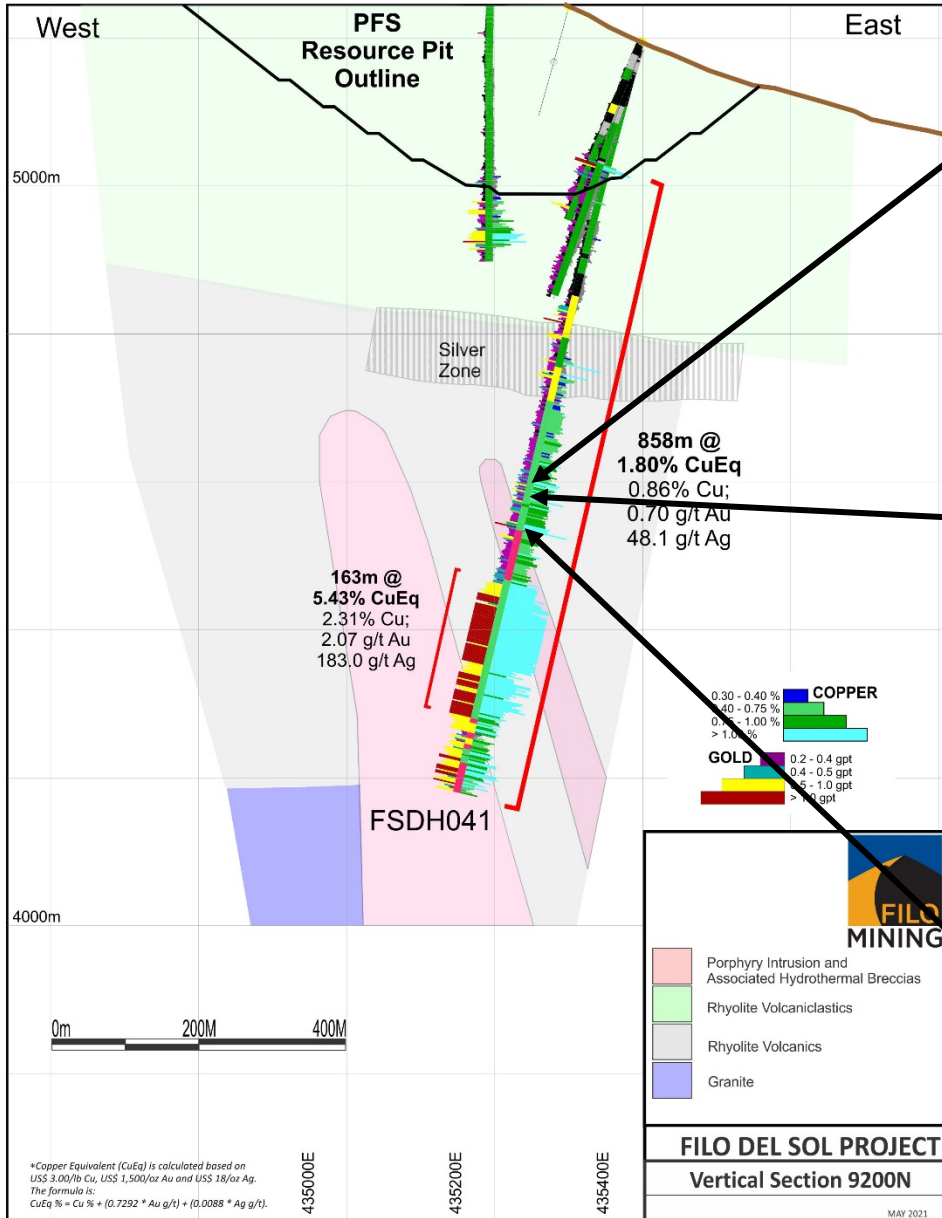


1.05% CuEq (0.65% Cu; 0.44 g/t Au; 9.0 g/t Ag)

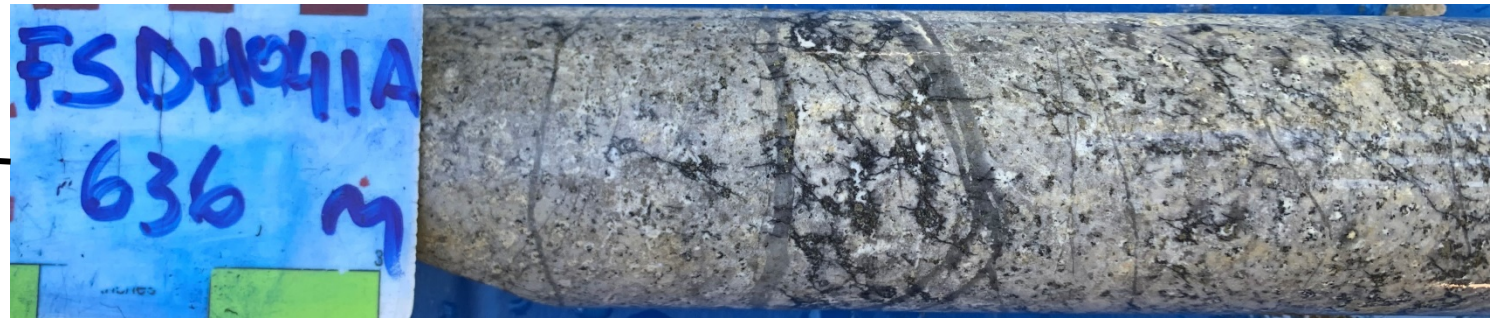


1.36% CuEq (1.01% Cu; 0.41 g/t Au; 6.0 g/t Ag)

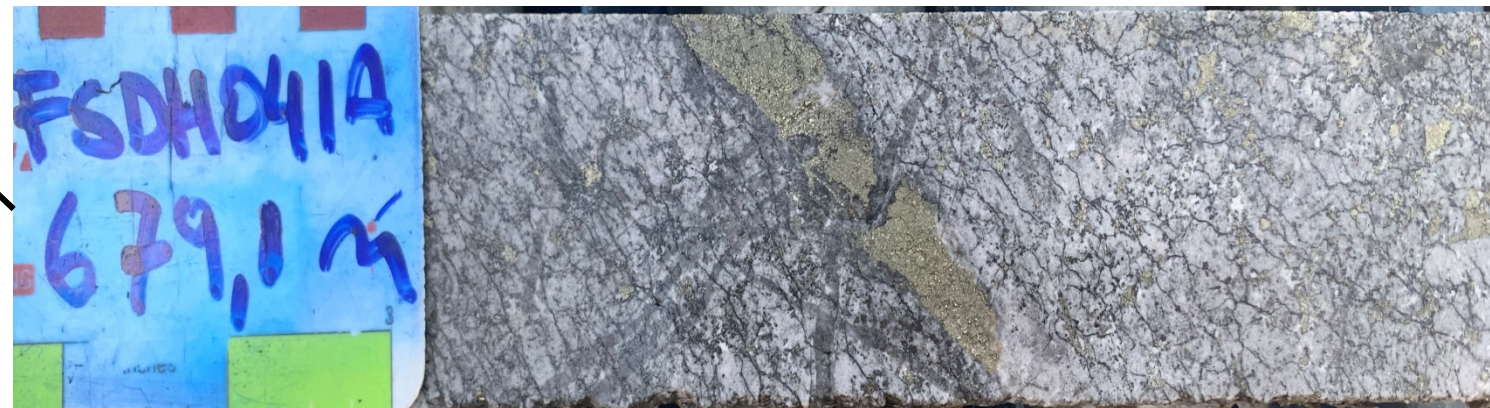
SECTION 9200N



1.43% CuEq (1.06% Cu; 0.45 g/t Au; 5.0 g/t Ag)

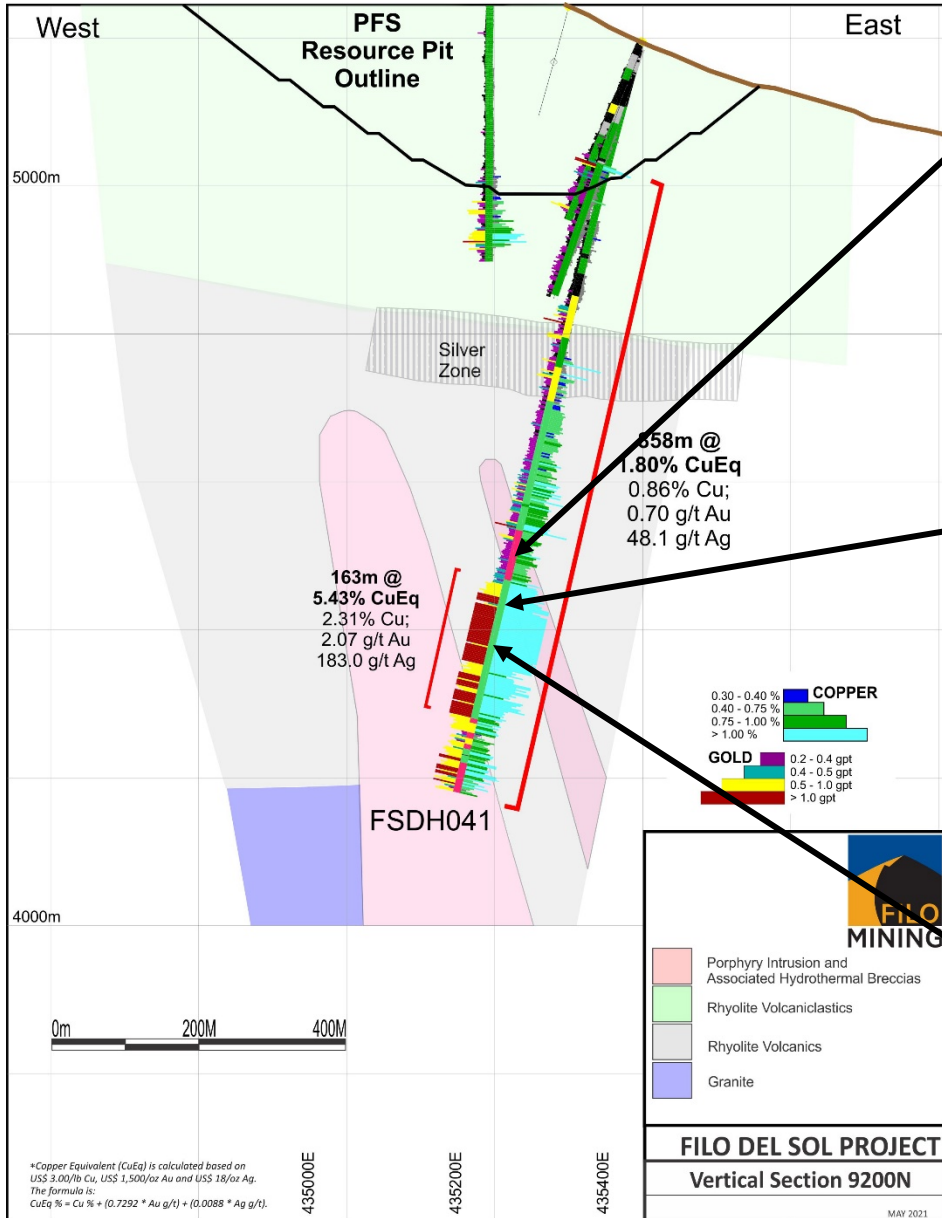


1.89% CuEq (1.52% Cu; 0.48 g/t Au; 2.0 g/t Ag)



3.15% CuEq (2.24% Cu; 1.03 g/t Au; 18.0 g/t Ag)

SECTION 9200N



1.43% CuEq (1.06% Cu; 0.45 g/t Au; 5.0 g/t Ag)

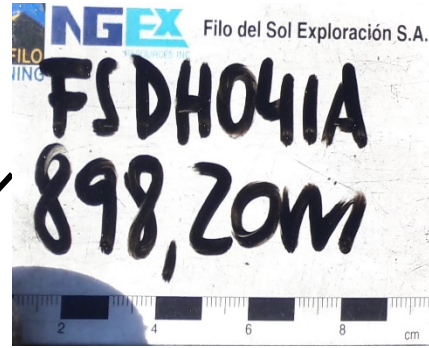
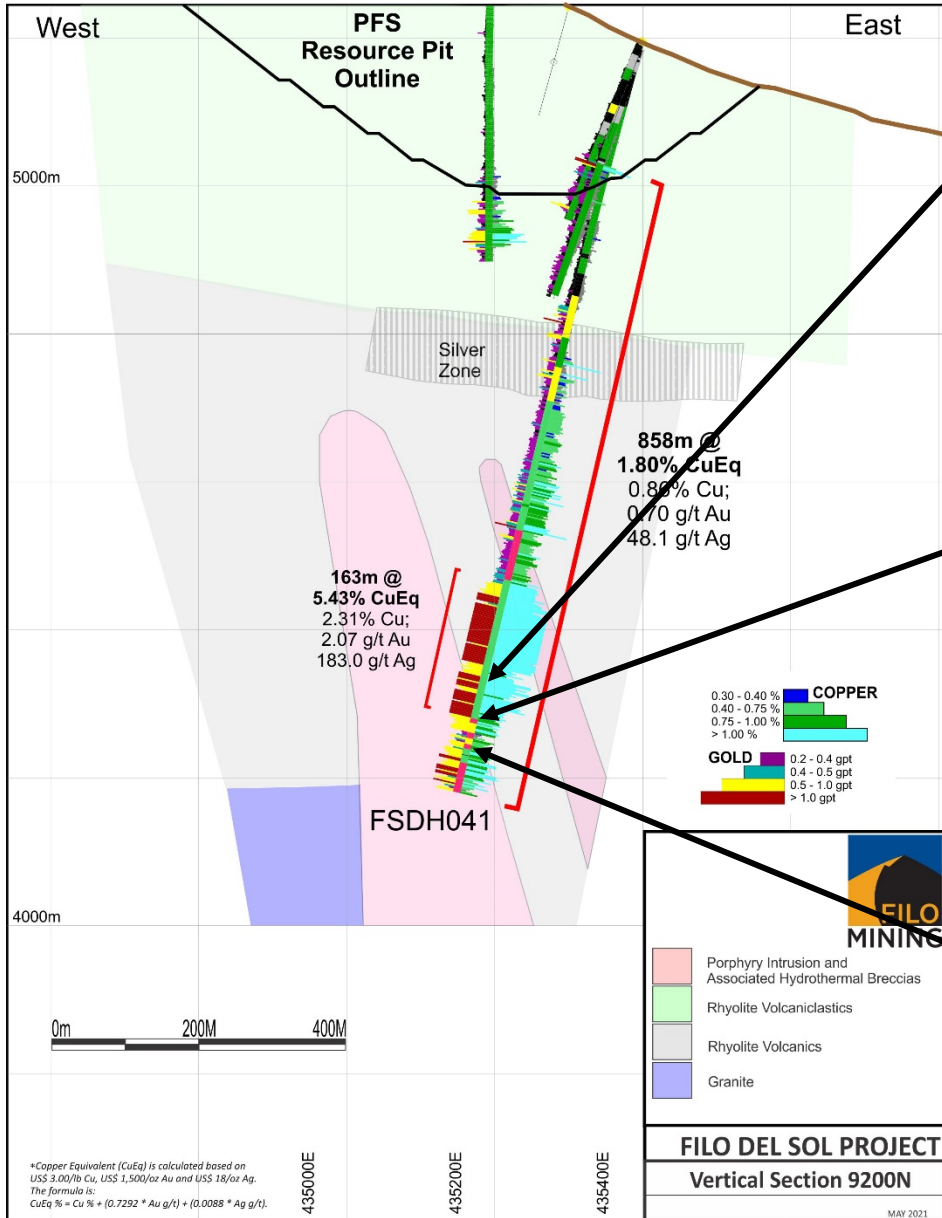


10.54% CuEq (4.06% Cu; 3.74 g/t Au; 427.0 g/t Ag)

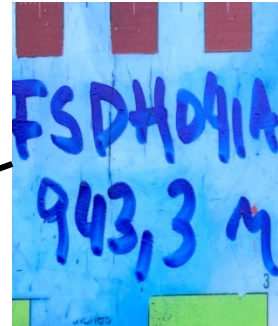


11.50% CuEq (4.12% Cu; 4.42 g/t Au; 472.0 g/t Ag)

SECTION 9200N



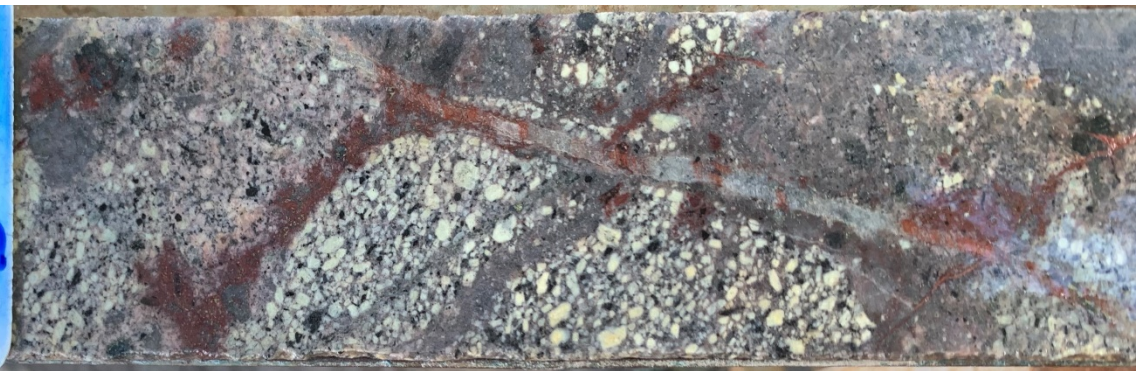
5.82% CuEq (2.78% Cu; 1.98 g/t Au; 181.0 g/t Ag)



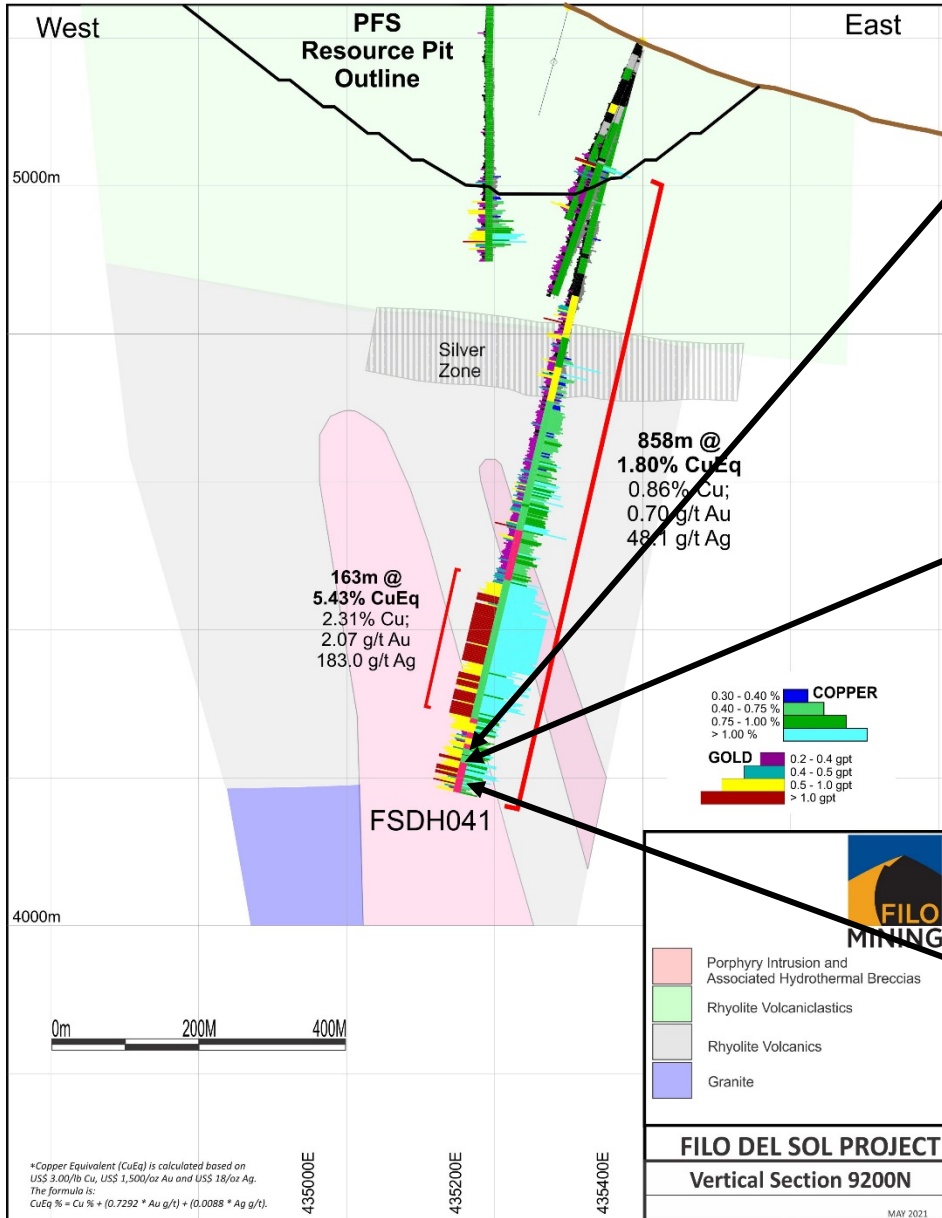
4.39% CuEq (0.99% Cu; 4.55 g/t Au; 9.0 g/t Ag)



1.19% CuEq (0.74% Cu; 0.61 g/t Au; 1.0 g/t Ag)



SECTION 9200N



2.10% CuEq (1.32% Cu; 1.05 g/t Au; 2.0 g/t Ag)



1.52% CuEq (1.01% Cu; 0.67 g/t Au; 3.0 g/t Ag)



2.53% CuEq (1.21% Cu; 1.73 g/t Au; 7.0 g/t Ag)