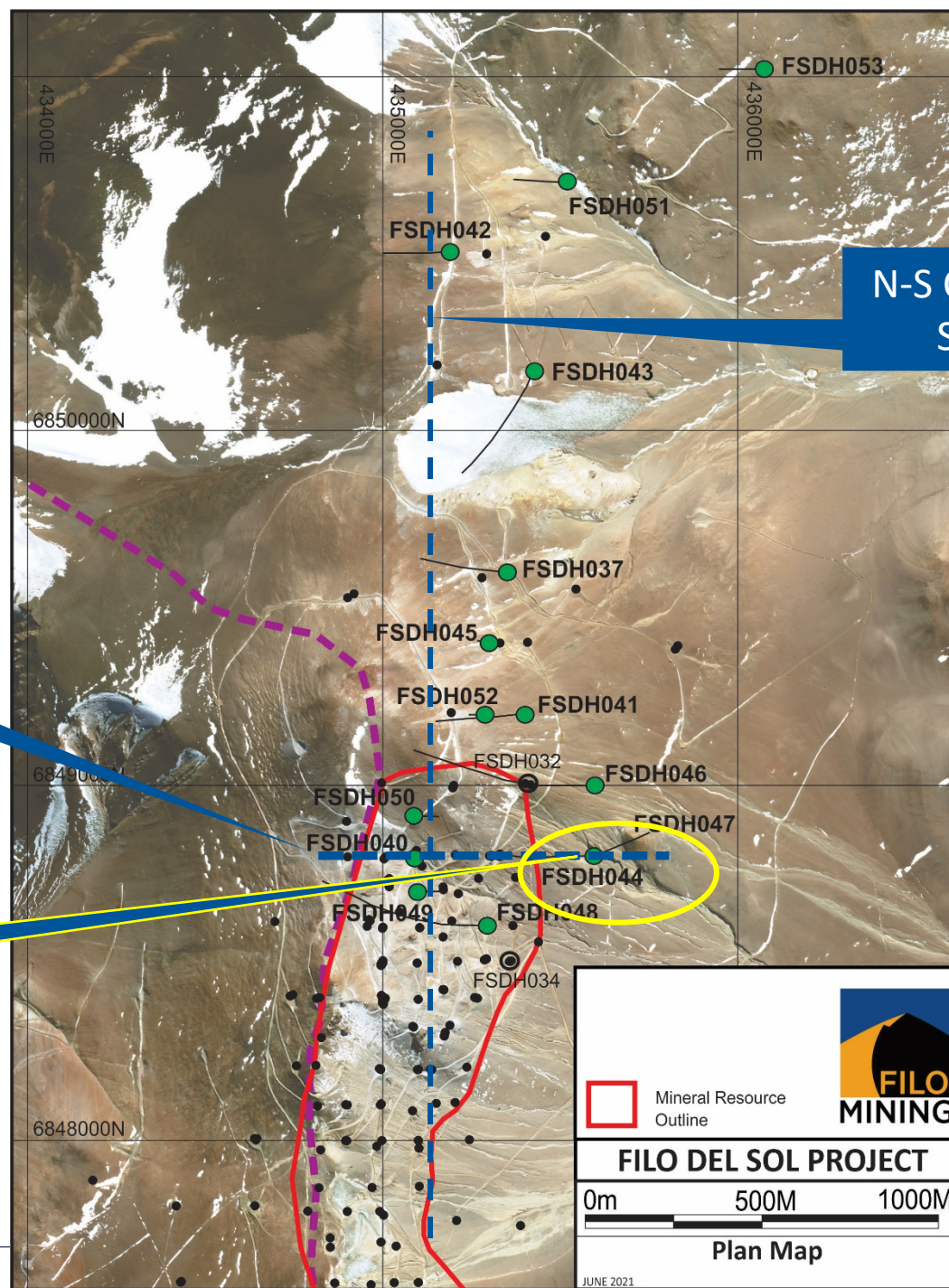


FILO 2020/2021 PROGRAM

- Sections and Photos from 2020/2021 Drill Holes
- Grade values are from 2 metre intervals containing the photographed sample



N-S Composite Section

Section 8800N

FSDH044

Mineral Resource Outline

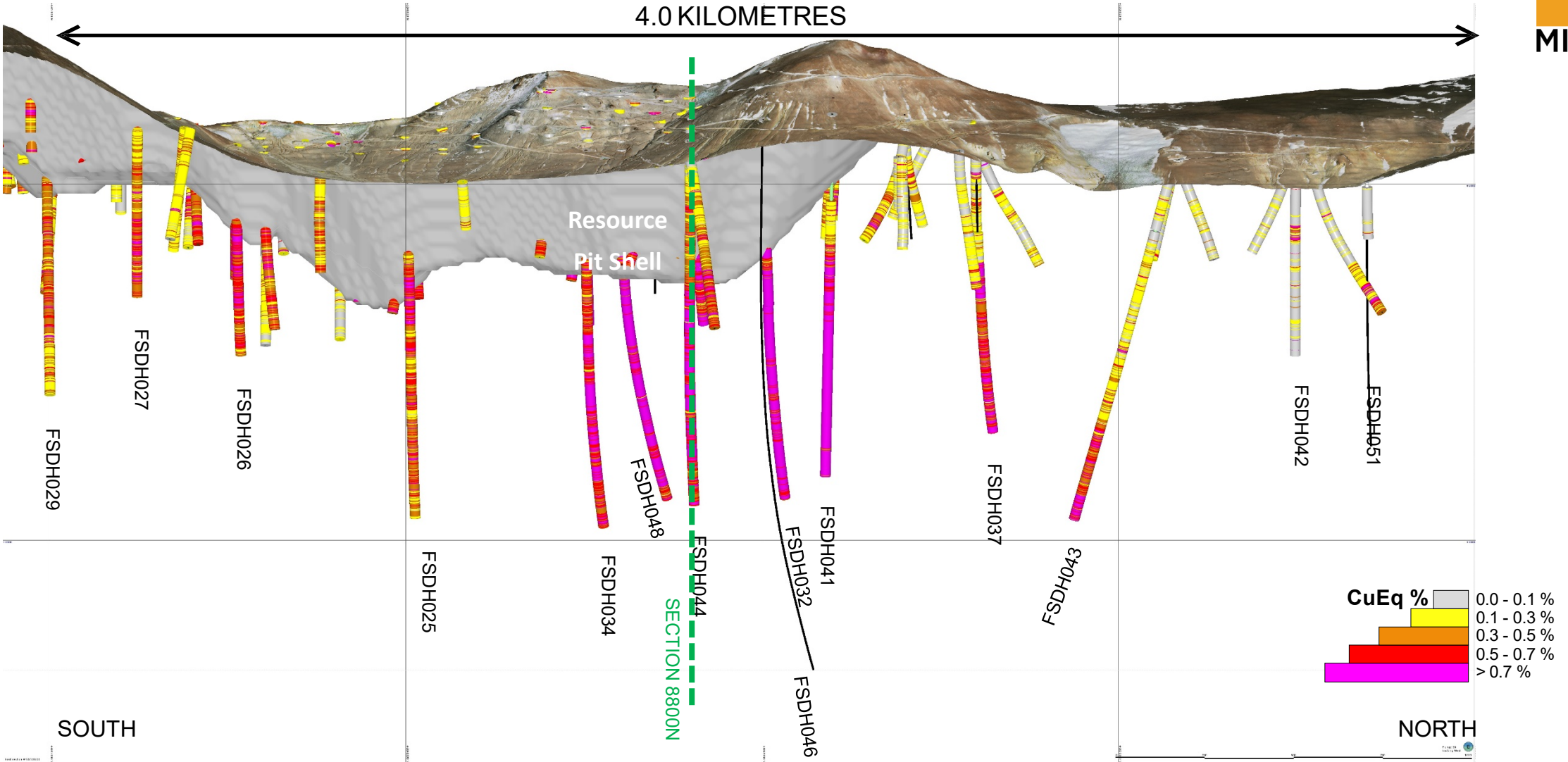
FILO DEL SOL PROJECT

0m 500M 1000M

Plan Map

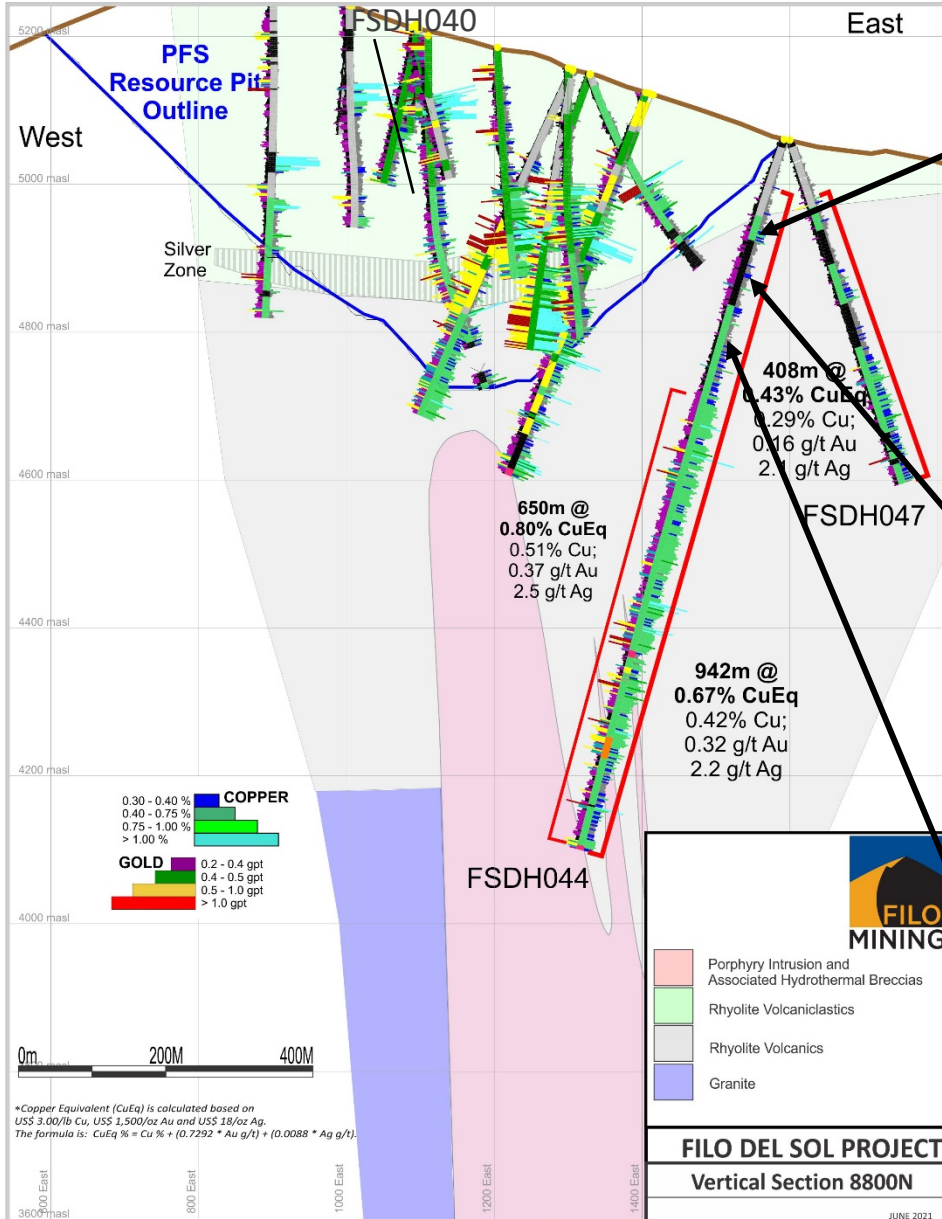
JUNE 2021

DEEP DRILLING RESULTS



Copper Equivalent (CuEq) is calculated based on US\$ 3.00/lb Cu, US\$ 1,500/oz Au and US\$ 18/oz Ag. The formula is: $CuEq \% = Cu \% + (0.7292 * Au \text{ g/t}) + (0.0088 * Ag \text{ g/t})$.

SECTION 8800N



0.59% CuEq
(0.41% Cu; 0.24 g/t Au
0.5 g/t Ag)

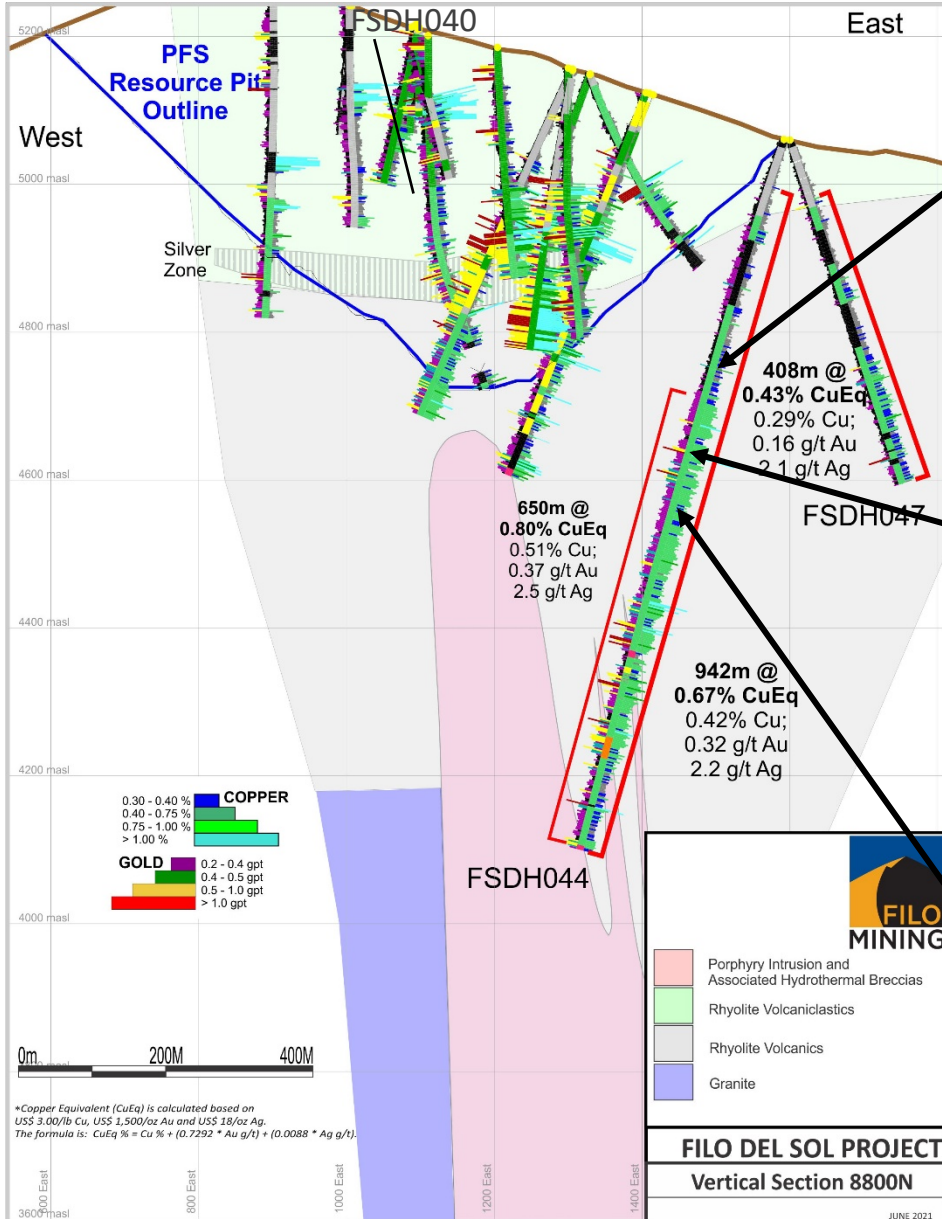


0.54% CuEq
(0.35% Cu; 0.26 g/t Au
0.5 g/t Ag)



0.36% CuEq
(0.22% Cu; 0.14 g/t Au
4.0 g/t Ag)

SECTION 8800N



0.53% CuEq
(0.36% Cu; 0.21 g/t Au
2.0 g/t Ag)



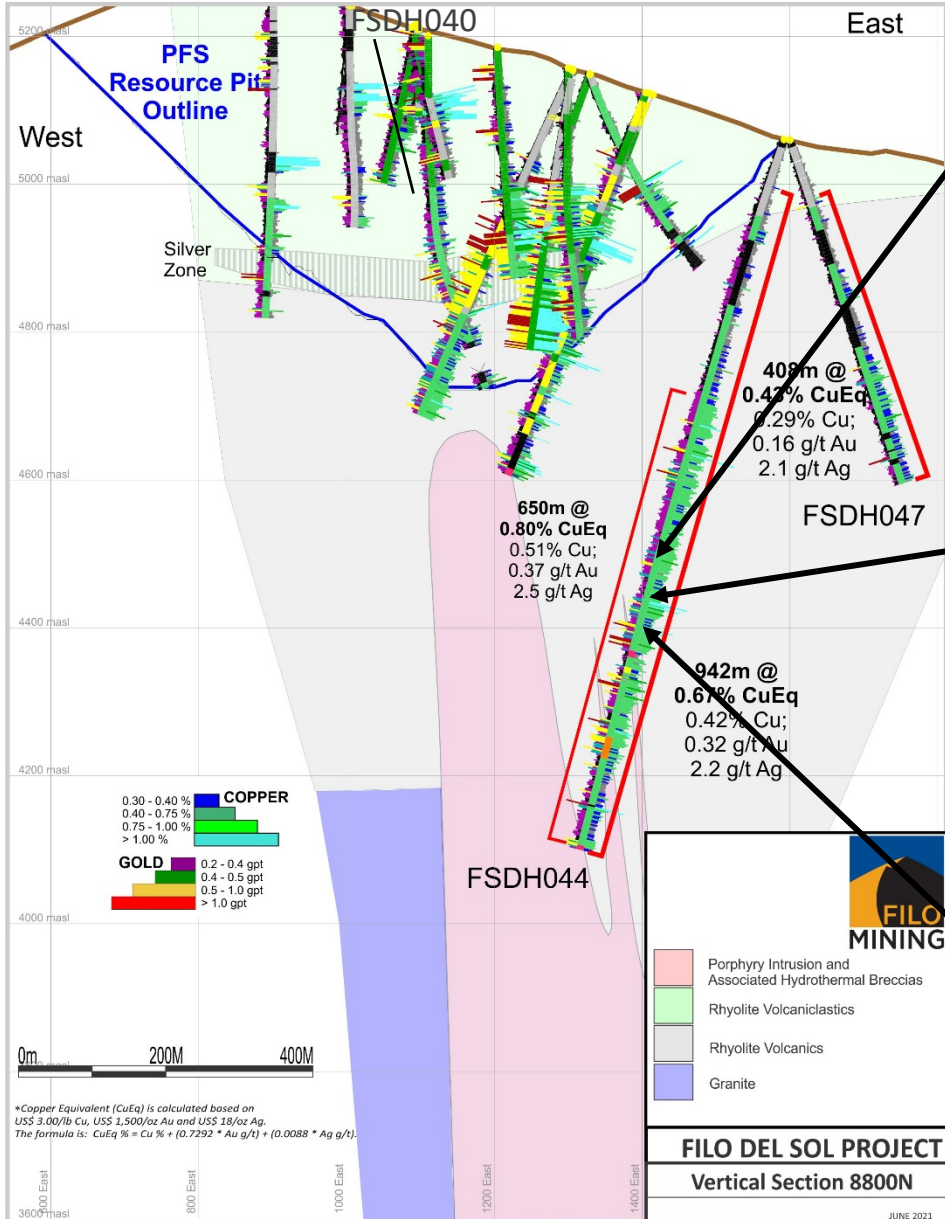
1.08% CuEq (0.66% Cu; 0.53 g/t Au; 4.0 g/t Ag)



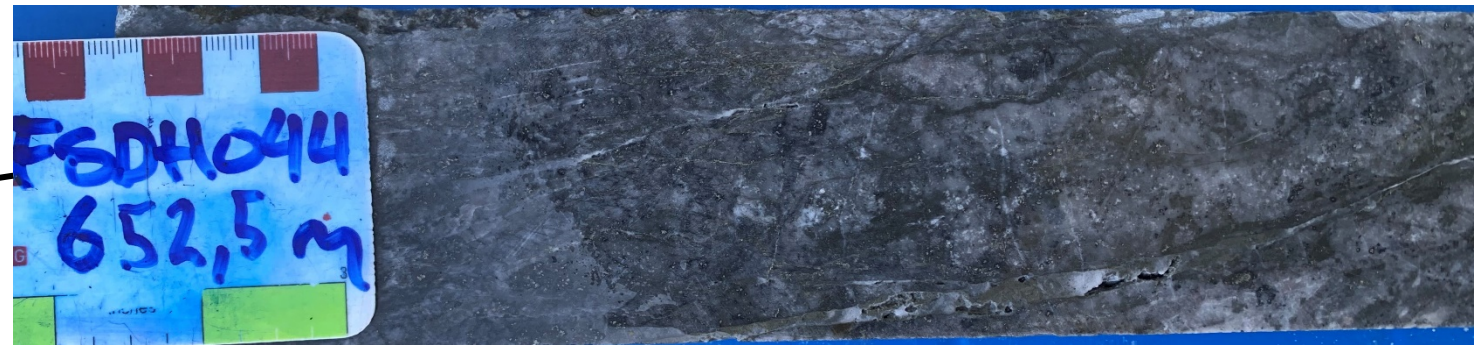
0.89% CuEq (0.59% Cu; 0.39 g/t Au; 2.0 g/t Ag)



SECTION 8800N



1.13% CuEq (0.79% Cu; 0.46 g/t Au; 1.0 g/t Ag)

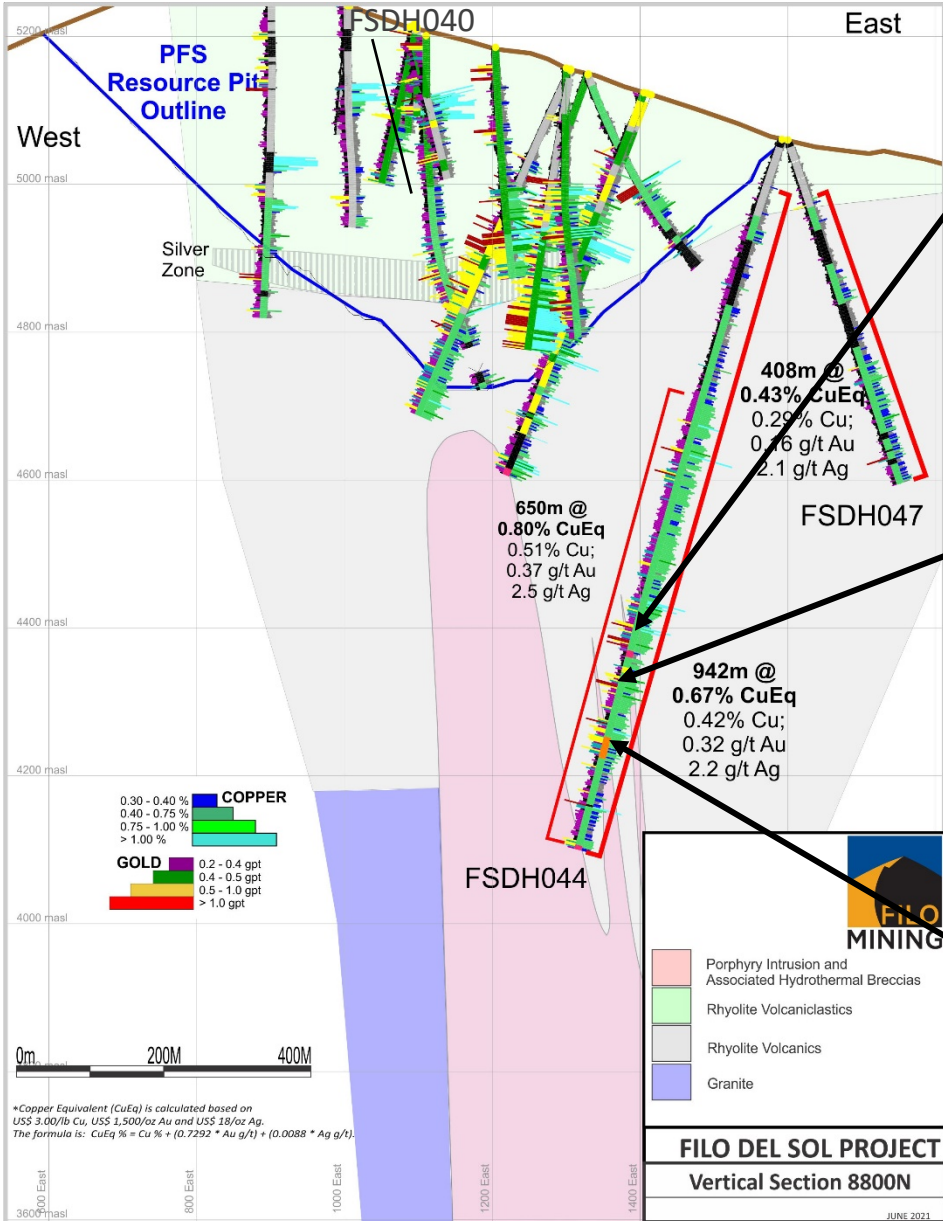


1.42% CuEq (1.10% Cu; 0.40 g/t Au; 3.0 g/t Ag)



0.68% CuEq (0.45% Cu; 0.30 g/t Au; 1.0 g/t Ag)

SECTION 8800N



0.91% CuEq (0.58% Cu; 0.44 g/t Au; 1.0 g/t Ag)

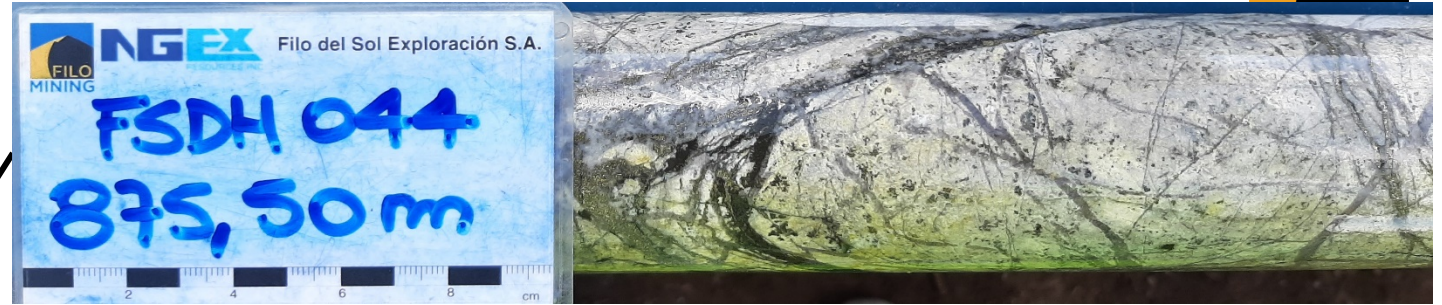
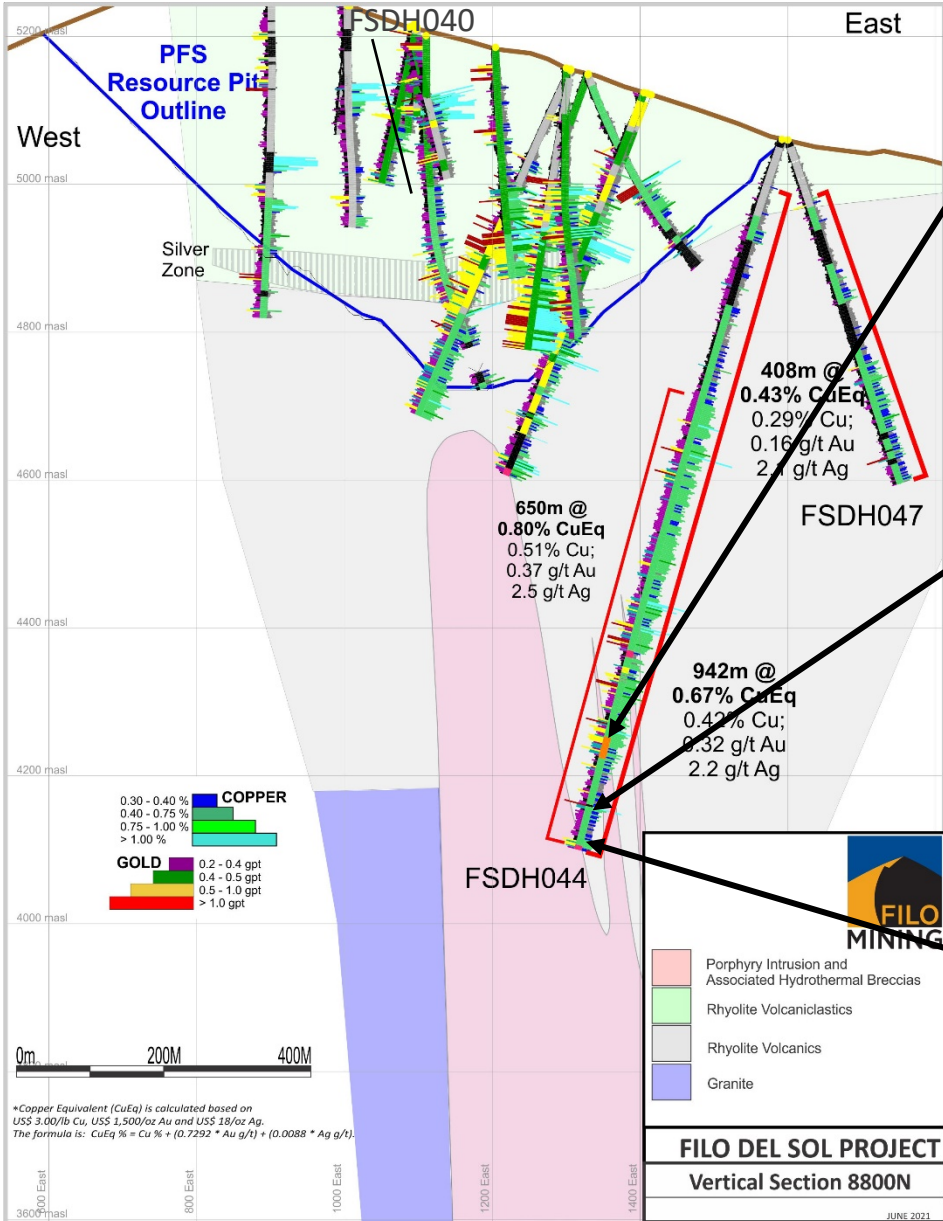


1.37% CuEq (0.90% Cu; 0.64 g/t Au; 0.5 g/t Ag)



1.12% CuEq (0.60% Cu; 0.71 g/t Au; 0.5 g/t Ag)

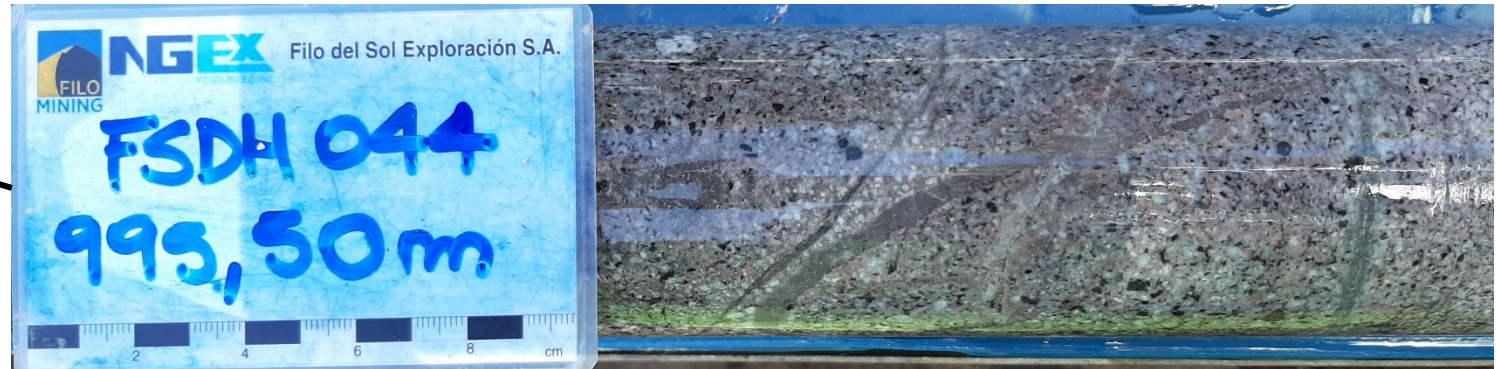
SECTION 8800N



0.42% CuEq (0.32% Cu; 0.13 g/t Au; 1.0 g/t Ag)



0.55% CuEq (0.33% Cu; 0.29 g/t Au; 1.0 g/t Ag)



0.81% CuEq (0.43% Cu; 0.51 g/t Au; 0.5 g/t Ag)