

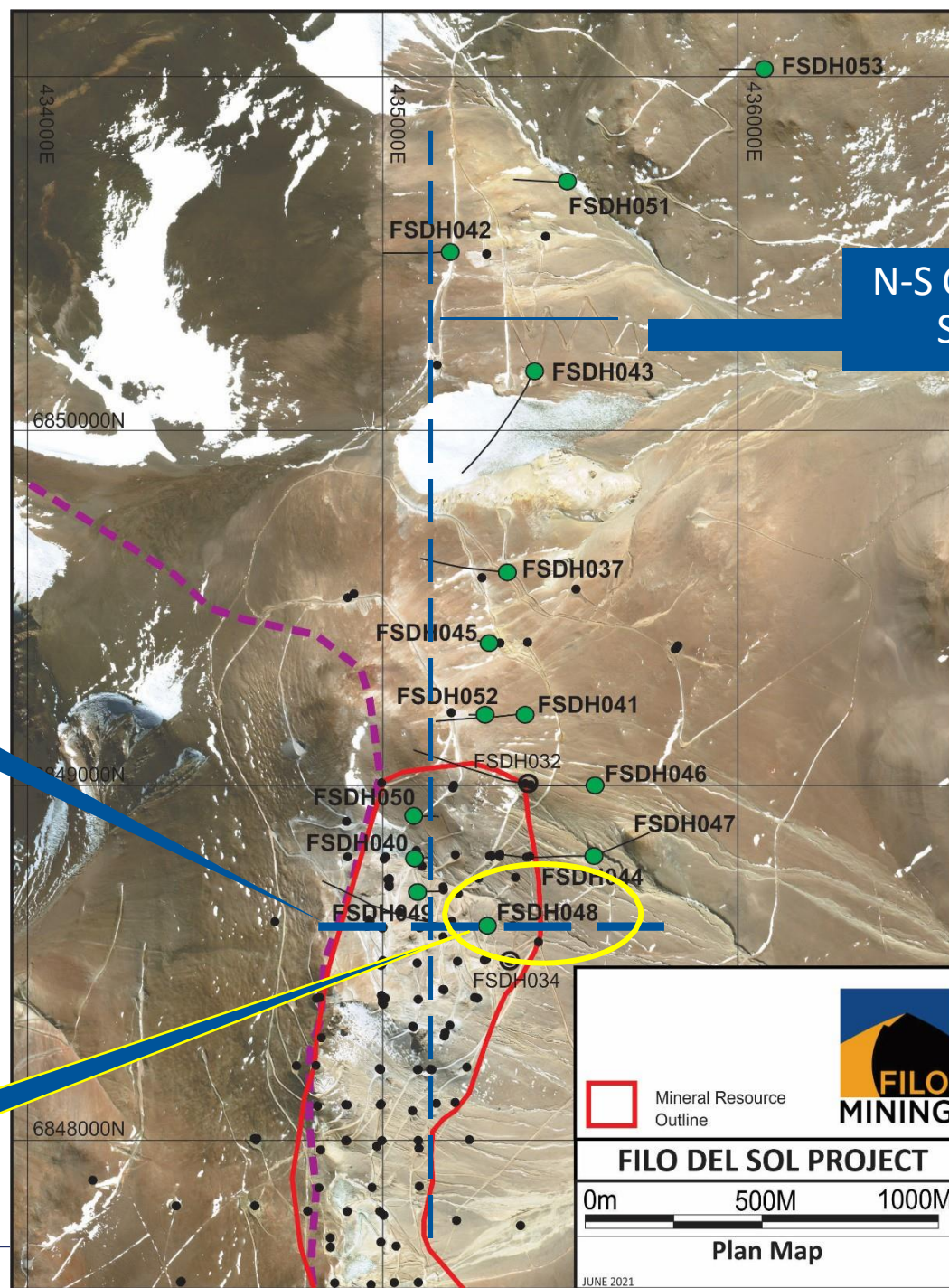
# FILO 2020/2021 PROGRAM

- Sections and Photos from 2020/2021 Drill Holes
- Grade values are from 2 metre intervals containing the photographed sample



Section 8600N

FSDH048



N-S Composite Section

Mineral Resource Outline

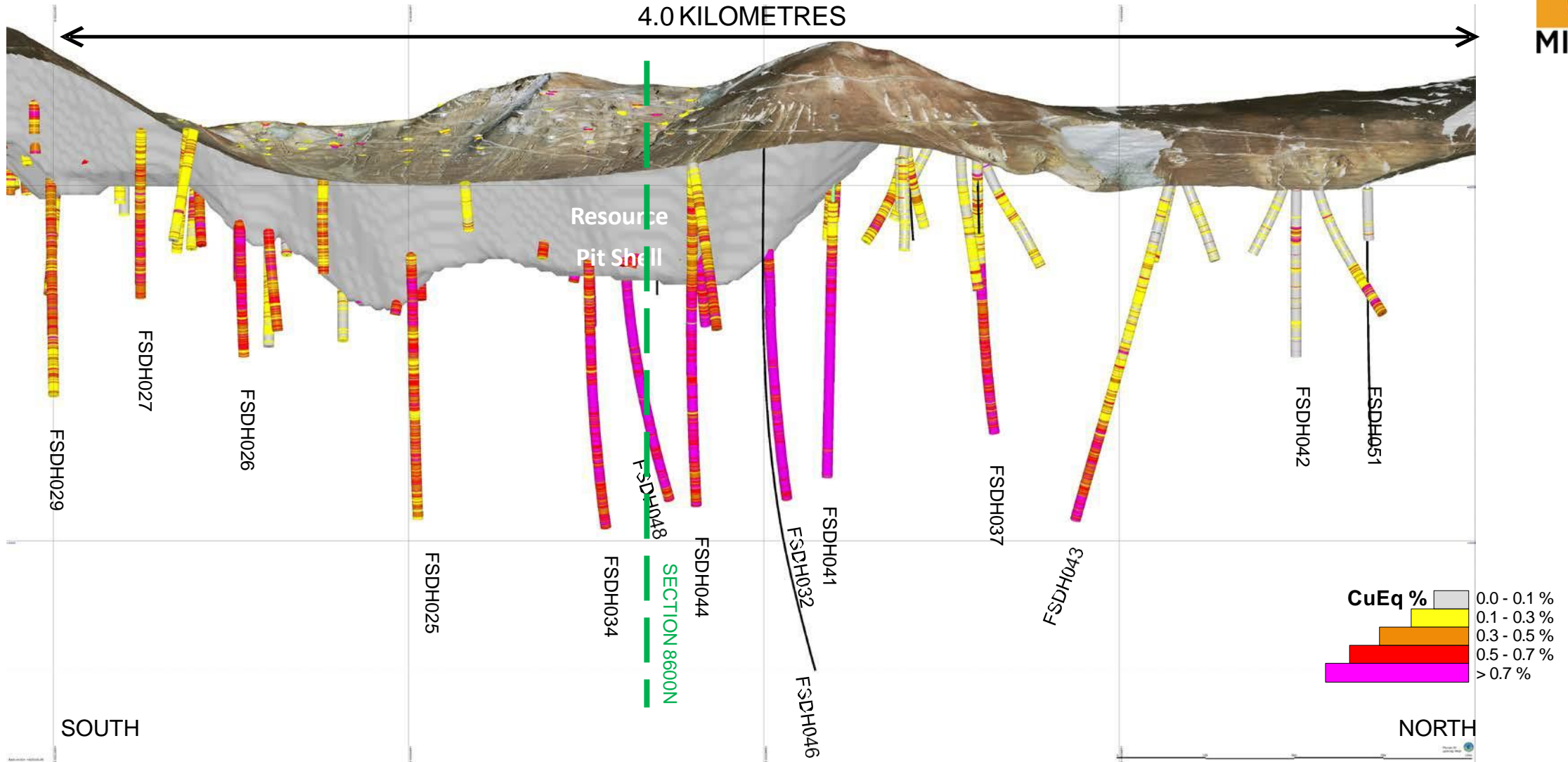
**FILO DEL SOL PROJECT**

0m 500M 1000M

**Plan Map**

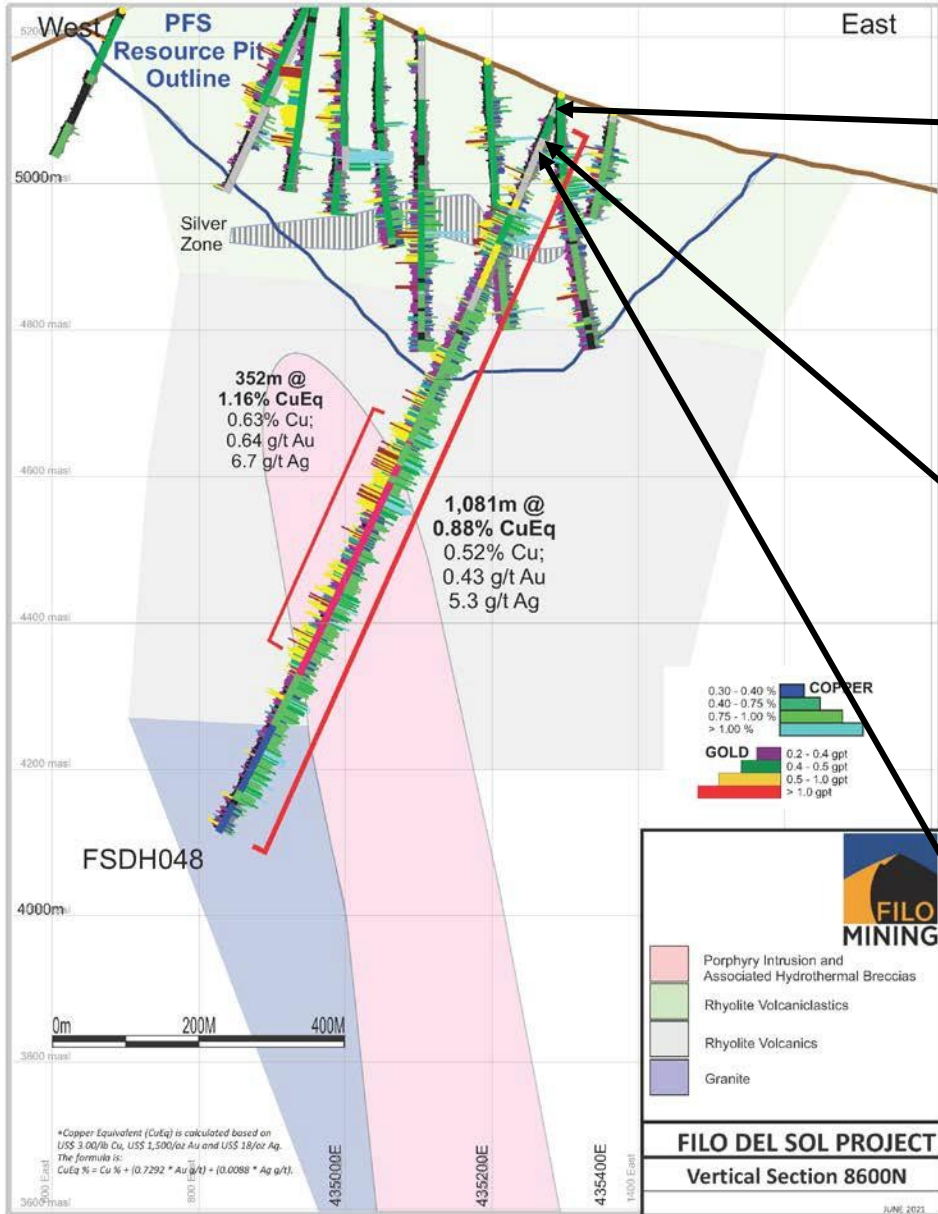
JUNE 2021

# DEEP DRILLING RESULTS



Copper Equivalent (CuEq) is calculated based on US\$ 3.00/lb Cu, US\$ 1,500/oz Au and US\$ 18/oz Ag. The formula is:  $CuEq \% = Cu \% + (0.7292 * Au \text{ g/t}) + (0.0088 * Ag \text{ g/t})$ .

# SECTION 8600N



0.12% CuEq (0.07% Cu; 0.07 g/t Au; 0.5 g/t Ag)

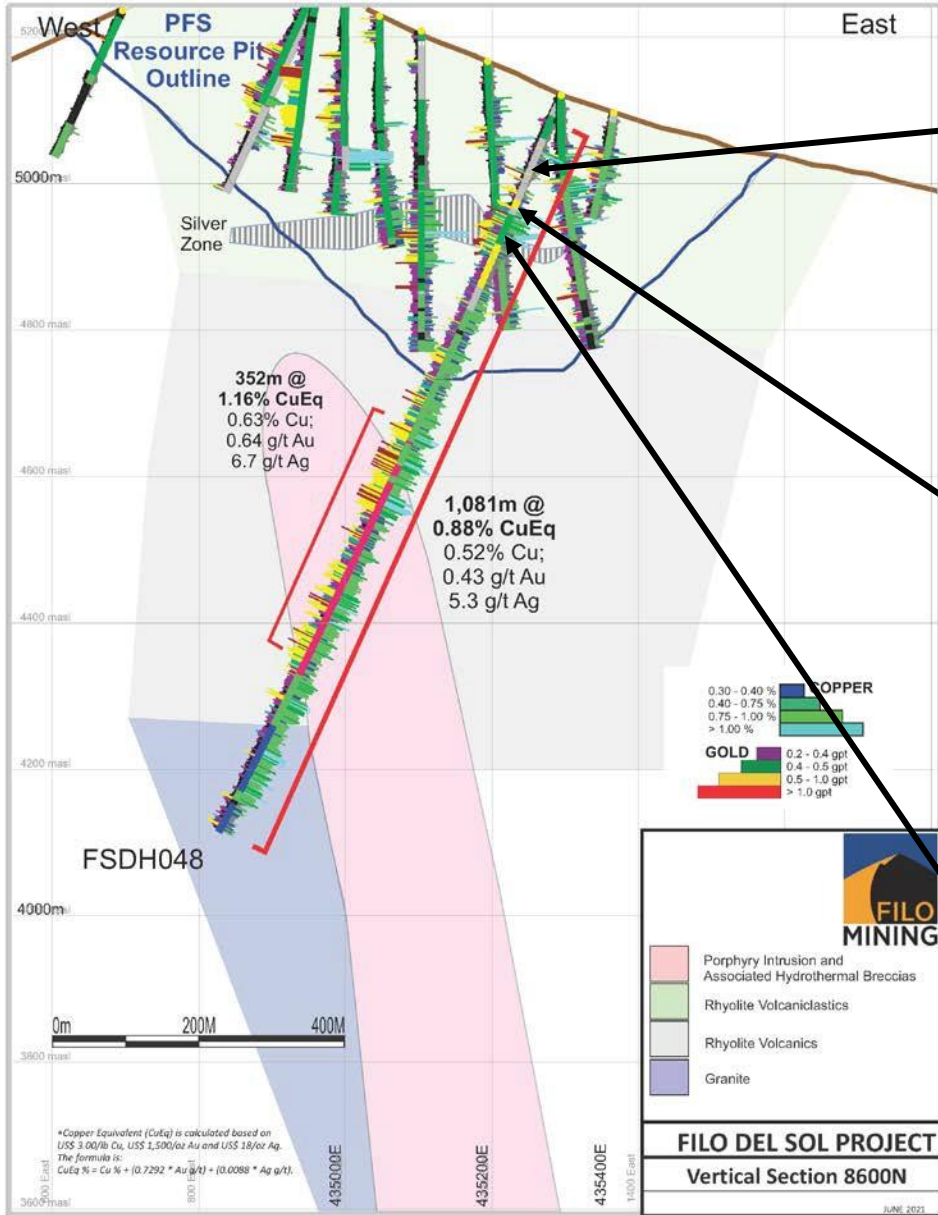


0.43% CuEq (0.28% Cu; 0.20 g/t Au; 1.0 g/t Ag)



1.01% CuEq (0.82% Cu; 0.26 g/t Au; 0.5 g/t Ag)

# SECTION 8600N



1.14% CuEq (0.43% Cu; 0.94 g/t Au; 2.0 g/t Ag)

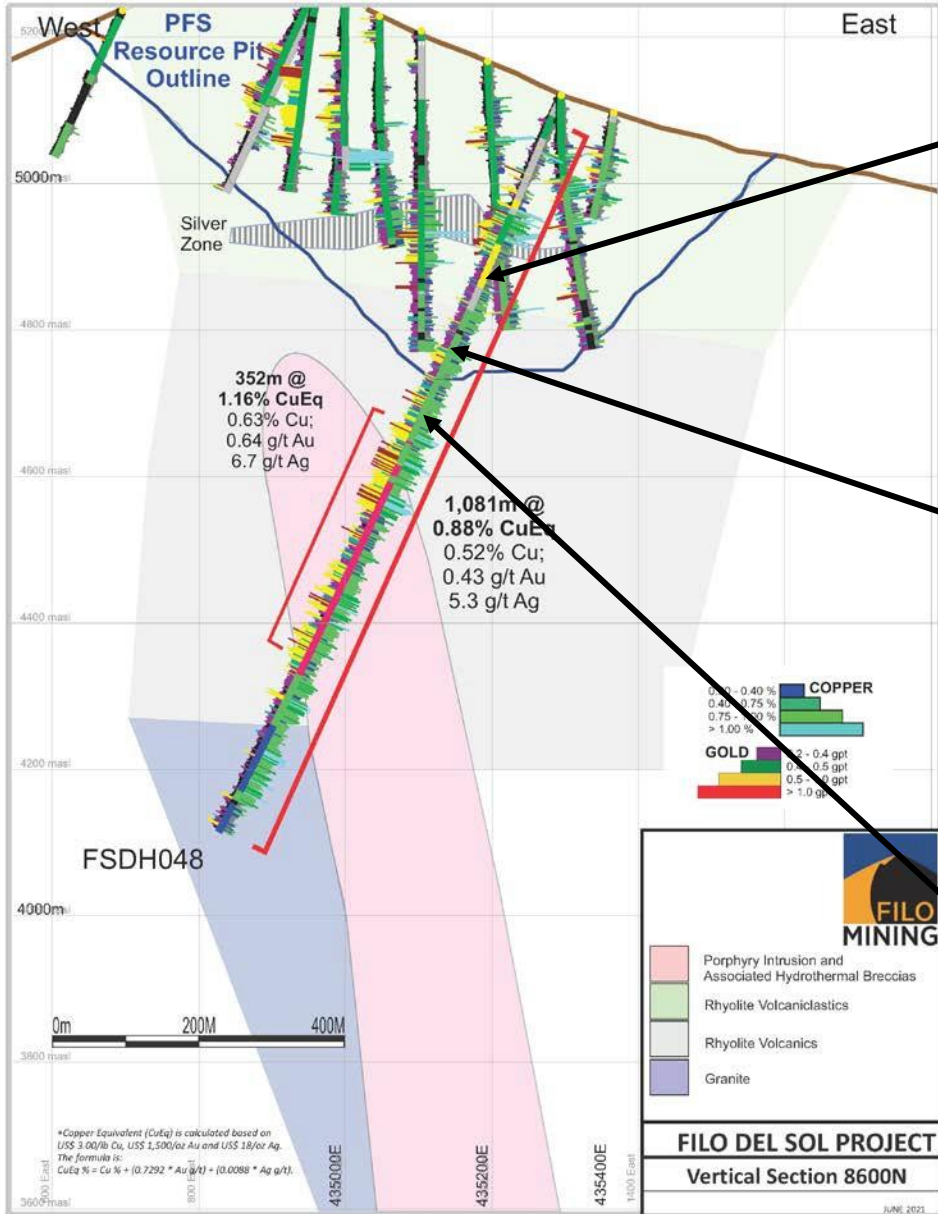


1.72% CuEq (1.21% Cu; 0.68 g/t Au; 1.0 g/t Ag)



2.48% CuEq (1.48% Cu; 1.24 g/t Au; 12.0 g/t Ag)

# SECTION 8600N



**0.70% CuEq (0.36% Cu; 0.45 g/t Au; 1.0 g/t Ag)**

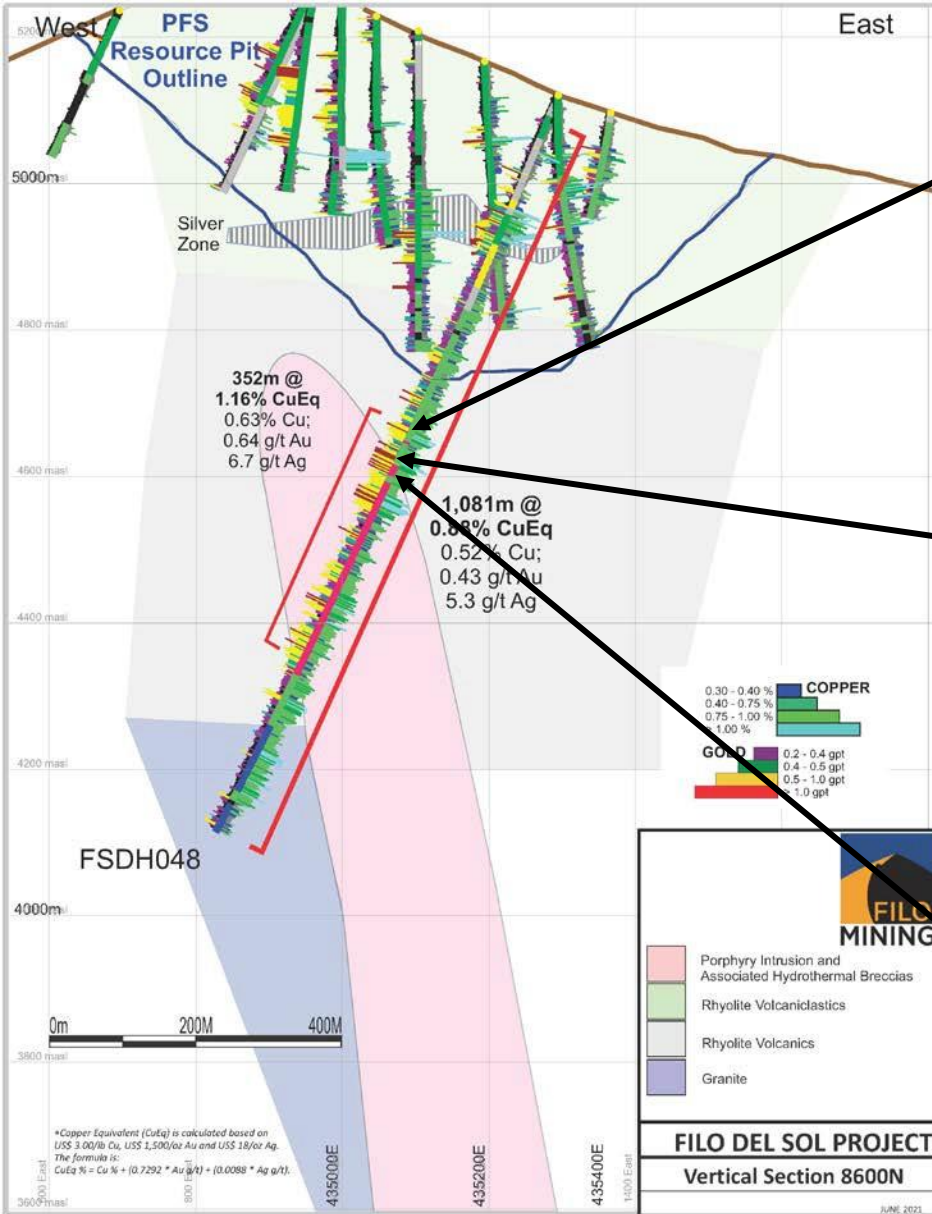


**0.78% CuEq (0.45% Cu; 0.43 g/t Au; 2.0 g/t Ag)**



**0.94% CuEq (0.57% Cu; 0.49 g/t Au; 0.5 g/t Ag)**

# SECTION 8600N



1.12% CuEq (0.55% Cu; 0.74 g/t Au; 4.0 g/t Ag)

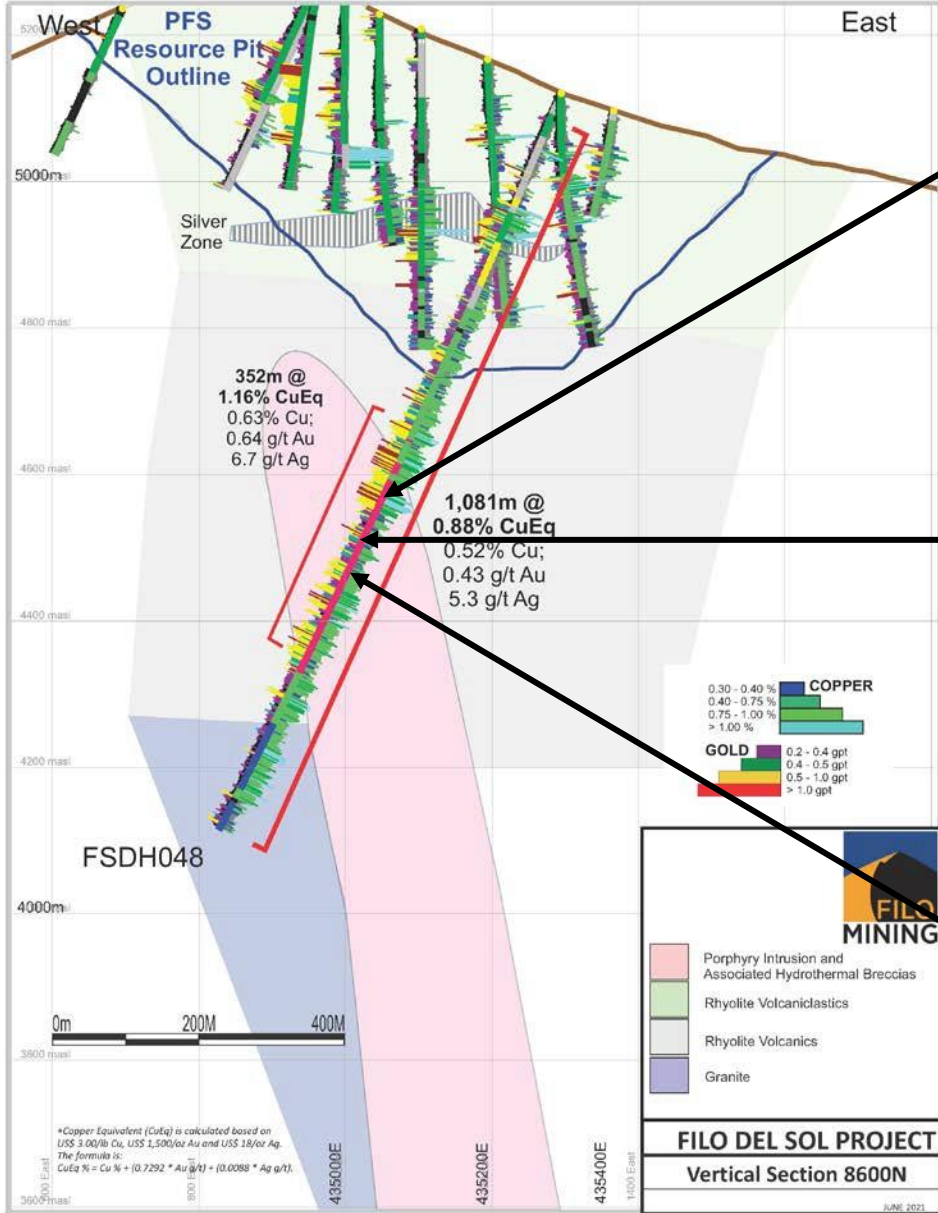


1.71% CuEq (0.81% Cu; 1.18 g/t Au; 5.0 g/t Ag)



2.38% CuEq (0.96% Cu; 1.94 g/t Au; 2.0 g/t Ag)

# SECTION 8600N



**5.14% CuEq (1.11% Cu; 1.40 g/t Au; 343.0 g/t Ag)**

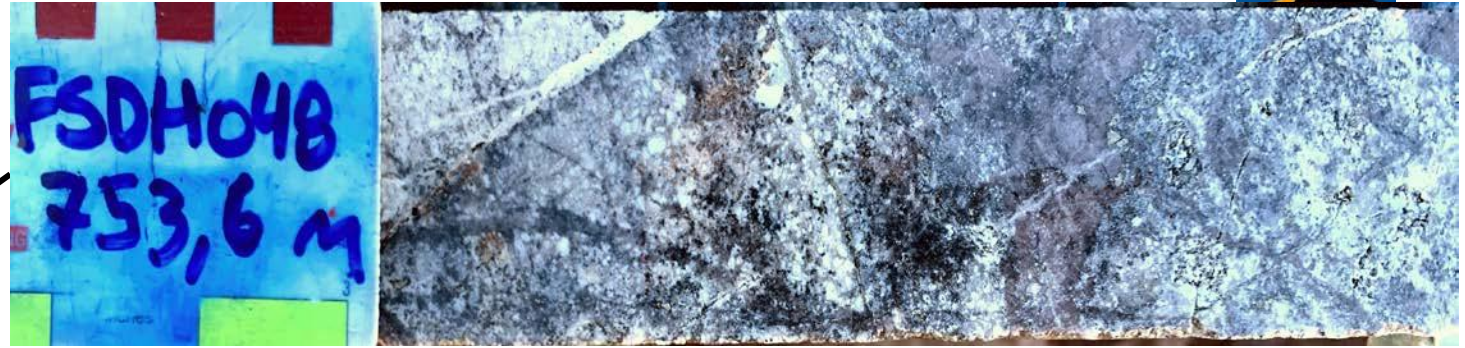
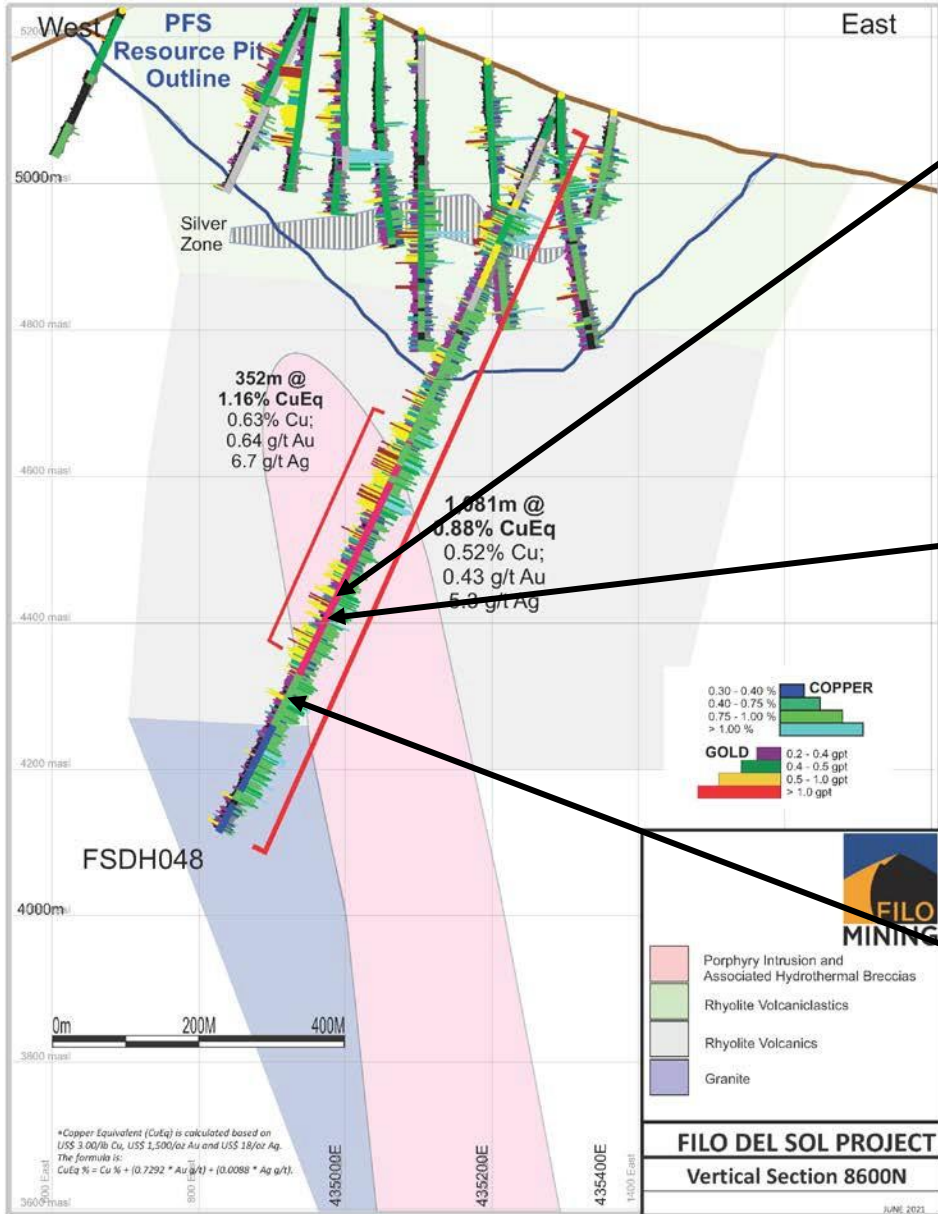


**0.67% CuEq (0.33% Cu; 0.46 g/t Au; 1.0 g/t Ag)**

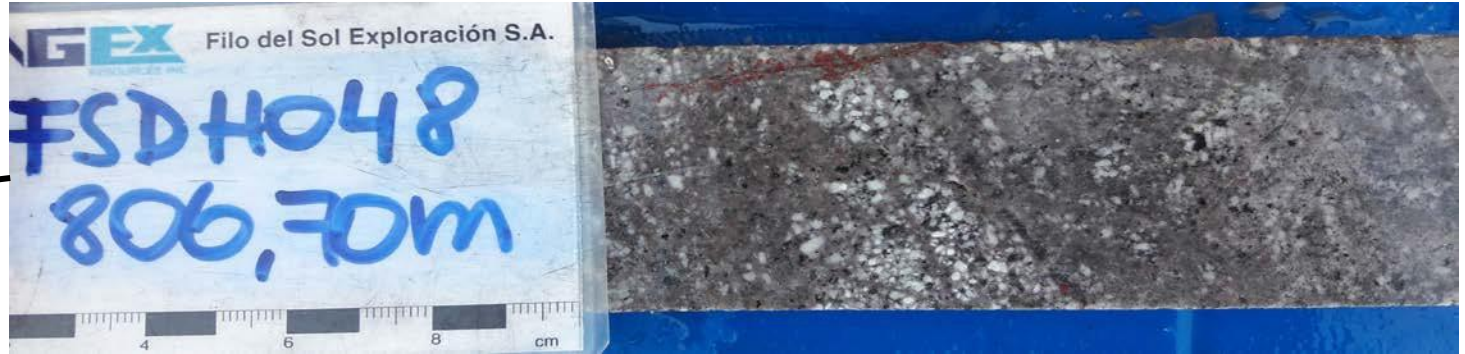


**1.00% CuEq (0.50% Cu; 0.68 g/t Au; 1.0 g/t Ag)**

# SECTION 8600N



**1.63% CuEq (0.94% Cu; 0.94 g/t Au; 1.0 g/t Ag)**



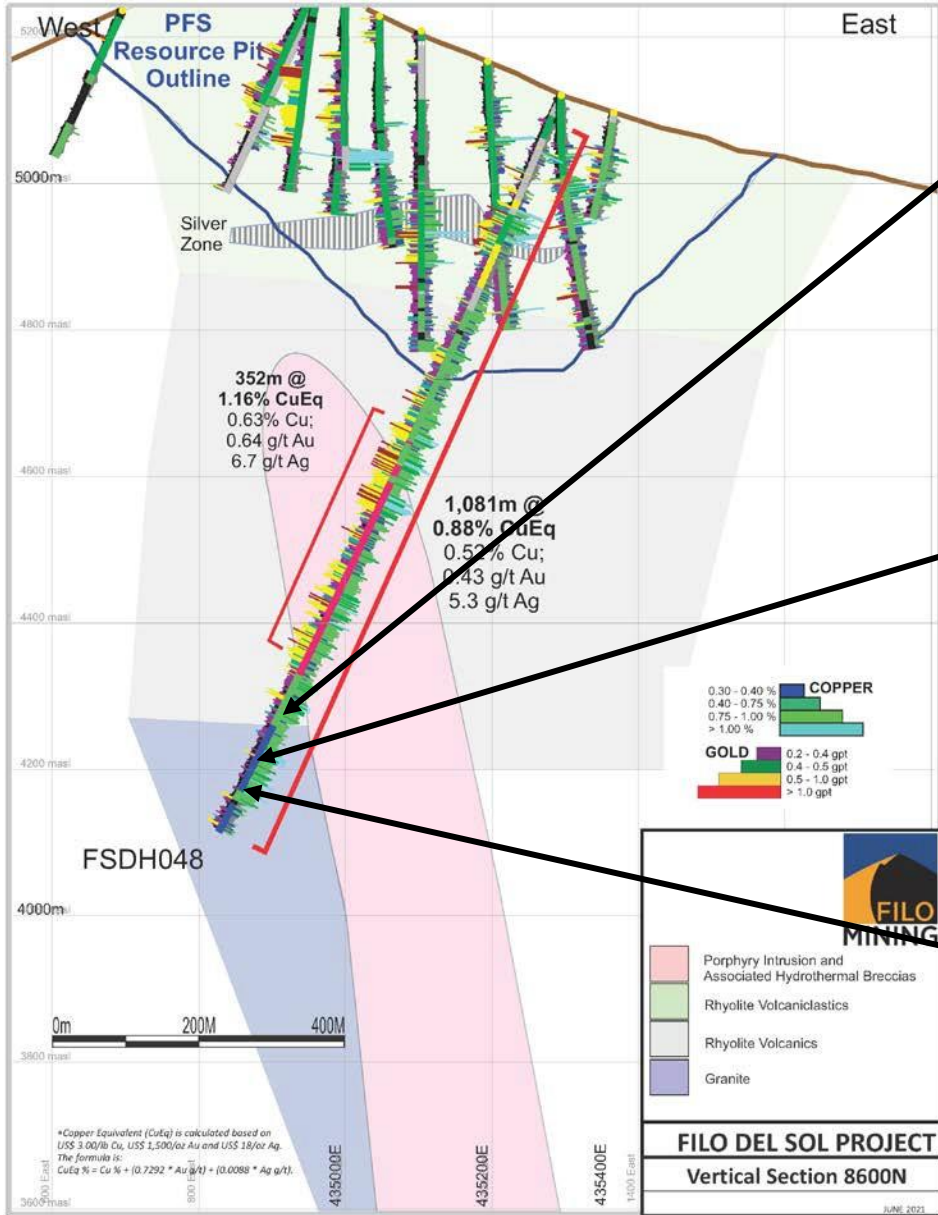
**1.09% CuEq (0.53% Cu; 0.76 g/t Au; 1.0 g/t Ag)**



**0.90% CuEq (0.71% Cu; 0.25 g/t Au; 1.0 g/t Ag)**



# SECTION 8600N



1.03% CuEq (0.84% Cu; 0.25 g/t Au; 0.5 g/t Ag)



0.80% CuEq (0.70% Cu; 0.10 g/t Au; 4.0 g/t Ag)



0.92% CuEq (0.83% Cu; 0.07 g/t Au; 4.0 g/t Ag)